



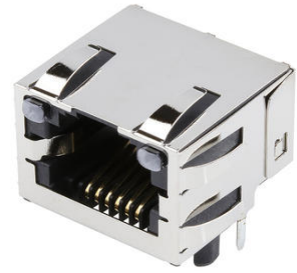
**Part Number :** [438600011](#)

**Product Description :** Modular Jack, Right-Angle, Low Profile, Inverted, Shielded, All Panel Grounding Tabs, Lightpipes, 6/6

**Series Number :** 43860

**Status :** Active

**Product Category :** Modular Jacks and Plugs



---

## Documents and Resources

### Drawings

[438600011 sd.pdf](#)

[PK-43860-005-001.pdf](#)

### 3D Models and Design Files

[STEP AP242](#)

[SOLIDWORKS](#)

[Creo](#)

### Specifications

[AS-43860-001-001.pdf](#)


[PS-43860-003-001.pdf](#)

[TS-43860-001-001.pdf](#)

---

## Product Environment Compliance

### Compliance

GADSL/IMDS	Compliant with Exemption 44; 34; 33
China RoHS	 per SJ/T 11365-2006
EU ELV	Not Relevant
Low-Halogen Status	Not Low-Halogen per IEC 61249-2-21
REACH SVHC	Not Contained per D(2025)4165-DC (25 June 2025)
EU RoHS	Compliant per EU 2015/863

## Compliance Statements

- EU RoHS
- REACH SVHC
- Low-Halogen

## Industry Documents

- IPC 1752A Class C
- IPC 1752A Class D
- Molex Product Compliance Declaration
- IEC-62474
- chemSHERPA (xml)

## Substances of Interest

- PFAS

## EU RoHS Certificate of Compliance

## Additional Product Compliance Information

---

## Part Details

### General

Status	Active
Category	Modular Jacks and Plugs
Series	43860
Description	Modular Jack, Right-Angle, Low Profile, Inverted, Shielded, All Panel Grounding Tabs, Lightpipes, 6/6
Comments	Lightpipes will withstand soldering temperature of 160° C
Component Type	PCB Jack
Magnetic	No
Performance Category	3
Power over Ethernet (PoE)	N/A
Product Name	Modular Jack 6/6
UPC	800753929777

### Agency

CSA	LR19980
UL	E107635

### Electrical

Current - Maximum per Contact	1.5A
Grounding to Panel	Yes
Grounding to PCB	Yes
Shielded	Yes
Voltage - Maximum	150V AC (RMS)

## Physical

Boot Color	N/A
Color - Resin	Black, Clear
Durability (mating cycles max)	500
Flammability	94V-0
Inverted / Top Latch	Yes
Jack Height	13.54mm
Lightpipes/LEDs	Lightpipes
Material - Metal	Brass, Phosphor Bronze
Material - Plating Mating	Gold
Material - Plating Termination	Tin
Material - Resin	High Temperature Thermoplastic, Polycarbonate
Net Weight	3.900/g
Orientation	Right Angle (Side Entry)
Packaging Type	Tray
Panel Mount	With Flange
PCB Locator	Yes
PCB Retention	Yes
PCB Thickness - Recommended	1.60mm
Pitch - Mating Interface	1.02mm
Pitch - Termination Interface	1.02mm
Plating min - Mating	1.270µm
Plating min - Termination	2.540µm
Port Configuration	1x1
Positions / Loaded Contacts	6/6
Temperature Range - Operating	-40° to +85°C
Termination Interface Style	Through Hole
Waterproof / Dustproof	No

Wire/Cable Type	N/A
-----------------	-----

### Solder Process Data

Lead-Free Process Capability	WAVE
------------------------------	------

---

### Mates With / Use With

#### Mates with Part(s)

Description	Part Number
Mates With	FCC 68 Plugs

---

This document was generated on Jan 04, 2026