

1. MATERIALS AND FINISHES:
BODY - PBT 15% G.F. , BLACK
CONTACT - PHOSPHOR BRONZE, GOLD PLATING (.000003 THICK)
 @ CONTACT AREA ONLY, TIN PLATING AT TAIL, NICKEL PLATED OVERALL
INSULATOR - POLYPROPYLENE
ROUND PIN - BRASS, TIN PLATING
GROUNDNG TERMINAL - STEEL, TIN PLATING

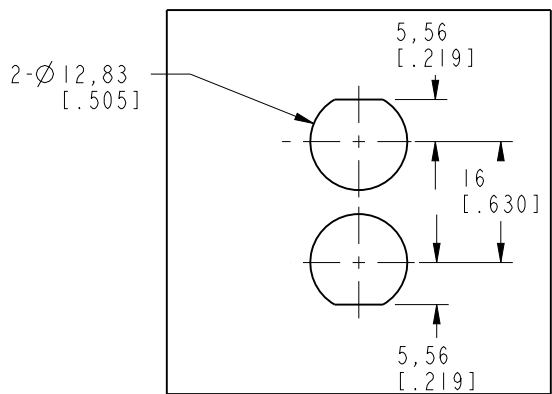
2. ELECTRICAL:
A. IMPEDANCE: 75 OHM
B. FREQUENCY RANGE: DC - 1 GHz
C. DIELECTRIC WITHSTANDING VOLTAGE: 1500 VRMS, MIN.

3. MECHANICAL:
A. DURABILITY: 500 CYCLES MIN.
B. TEMPERATURE RANGE: -55° C TO 85° C

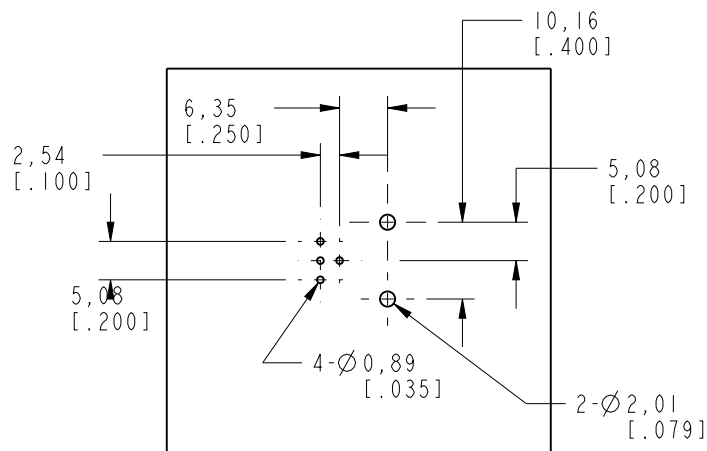
4. PACKAGING:
A. PACKAGED IN PACKING TRAYS
B. QUANTITY PER TRAY: 40

REVISIONS

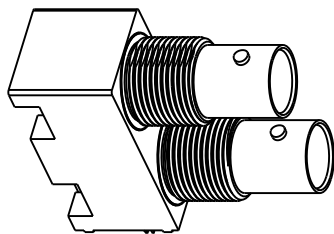
REV	DESCRIPTION	DATE	ECO	APPR
A	RELEASE TO MFG.	4/18/13	45442	EW



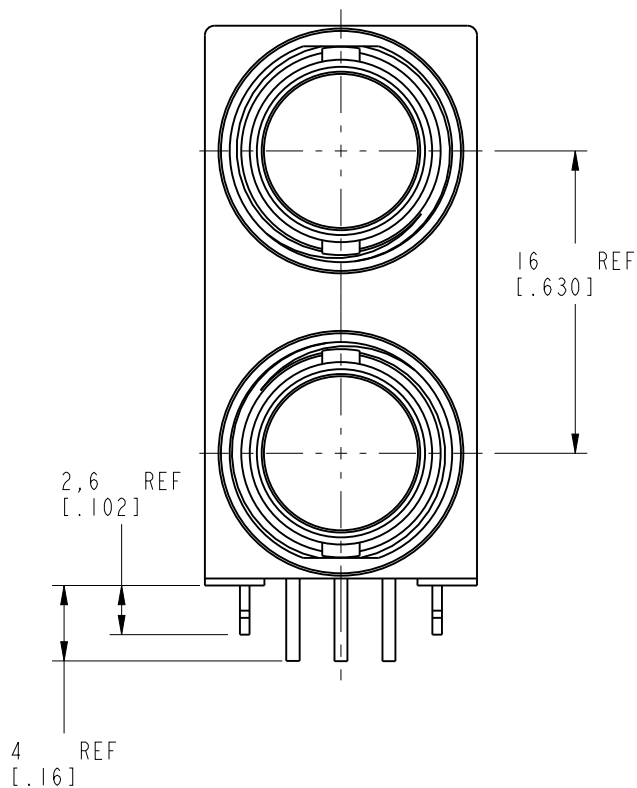
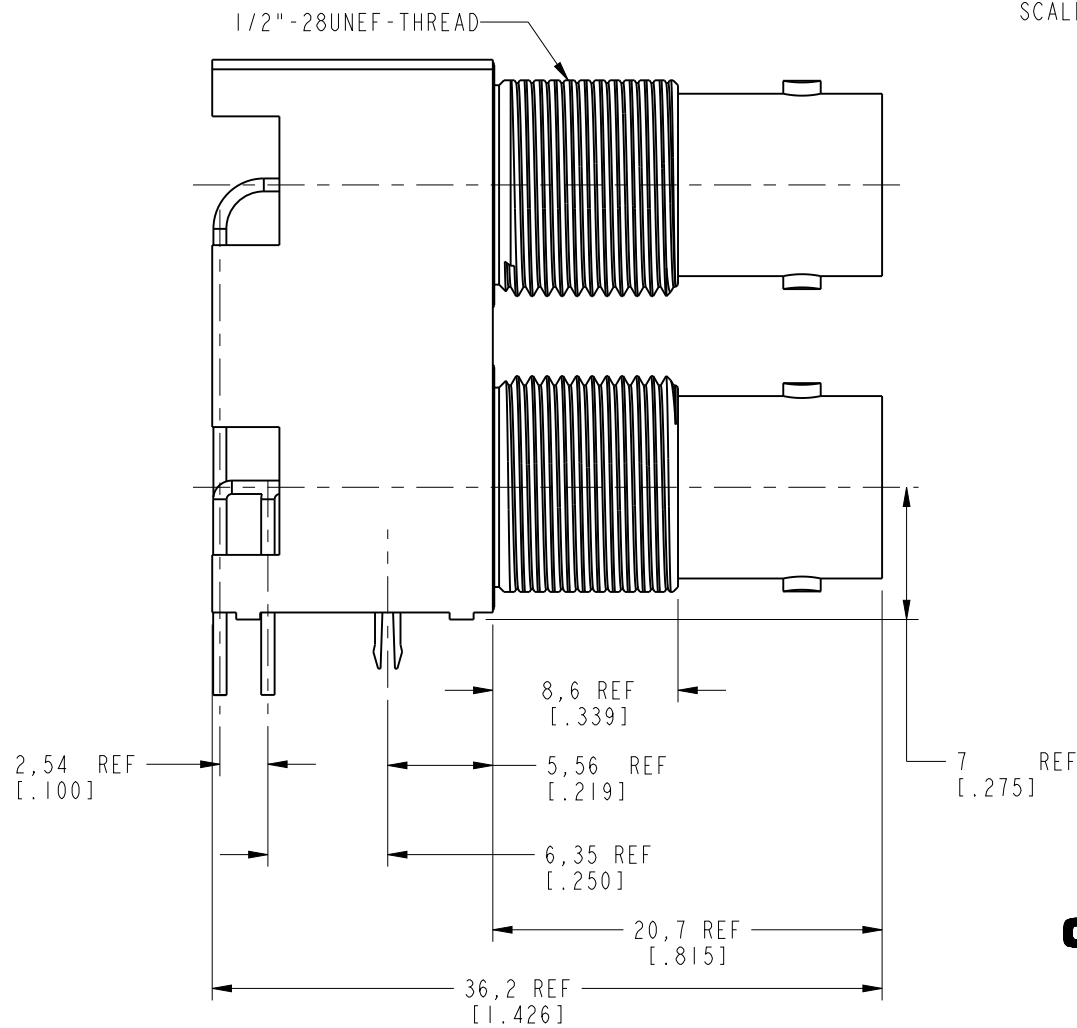
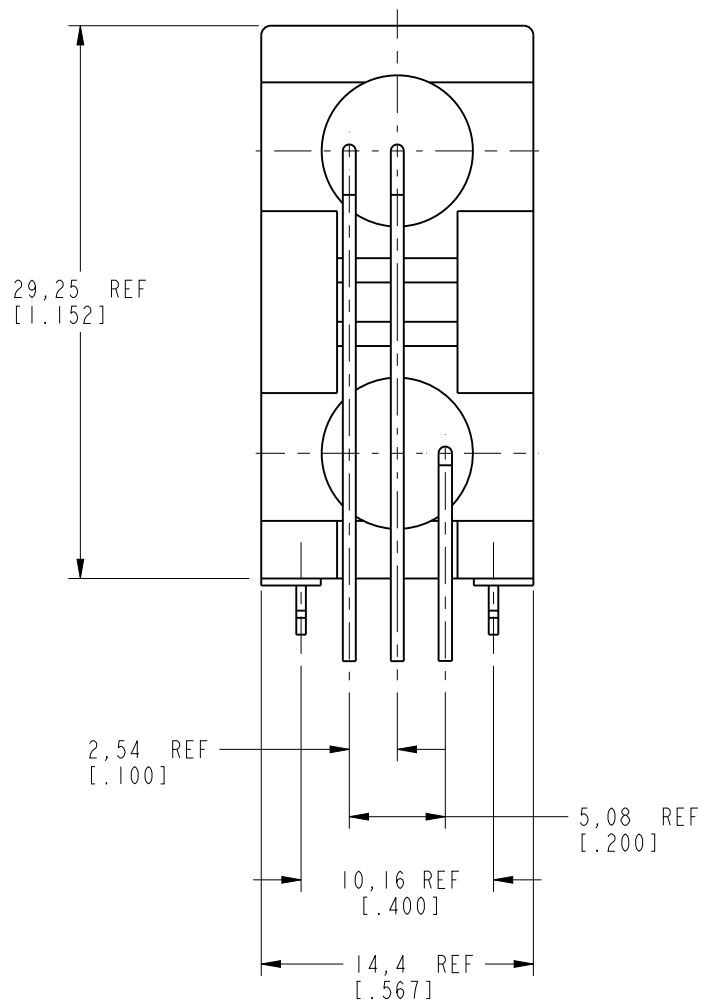
RECOMMENDED MOUNTING HOLE
SCALE 1.000



PCB MOUNTING HOLE
SCALE 1.000



SCALE 1.000



CUSTOMER OUTLINE DRAWING

ALL OTHER SHEETS ARE FOR INTERNAL USE ONLY

UNLESS OTHERWISE SPECIFIED, DIMENSIONS ARE IN METRIC AND TOLERANCES ARE: <0.5mm 0.5 - 6mm 6 - 30mm 30 - 120mm ANGLES ± 0.05mm ±0.1mm ±0.2mm ± 0.3mm ±1° NOTICE - These drawings, specifications, or other data (1) are, and remain the property of Amphenol corp. (2) must be returned upon request; and (3) are confidential and not to be disclosed to any person other than those to whom they are given by Amphenol Corp. the furnishing of these drawings, specifications, or other data by Amphenol Corp., or to any other person to anyone for any purpose is not to be regarded by implication or otherwise in any manner licensing, granting rights to permitting such holder or any other person to manufacture, use or sell any product, process or design, patented or otherwise, that may in any way be related to or disclosed by said drawings, specifications, or other data.	MATERIAL - -	DRAWN ERIC WANKOFF	DATE 01-Aug-12	TITLE 75 OHM DUAL PORT BNC R/A JACK, ISOLATED BLACK	Amphenol RF www.amphenolrf.com	
	REFERENCE EAR #	ENGINEER ERIC WANKOFF	DATE 01-Aug-12		DRAWING NO. 31-70505	
	CONFIGURATION LEVEL: Released	APPROVED K. CAPOZZI	DATE 3/26/13	SCALE: 2.5:1.0	SHEET 2 OF 2	ITEM NO. 31-70505
	FINISH	CAD FILE		DWG SIZE B	REV A	PART NO. 31-70505