

TMS-SCE and TMS-SCE-2X

HEAT SHRINK IDENTIFICATION SYSTEM

Technical Datasheet

TTDS-023 Revision 10 - Sept' 2025

TMS-SCE Military Grade, Heat Shrink Identification Marker Sleeving, for the identification of wire and cables.

Made from durable, flame retarded, radiation cross linked heat shrinkable polyolefin. Supplied in 'ladder format', sleeves are presented for ease of printing and kitting.

TMS-SCE is a thin wall, light weight, fast recovery 3:1 shrink ratio sleeve, allowing the customer to cover a wide range of cable diameters.

TMS-SCE-2X is a thicker, rugged wall, 2:1 shrink ratio sleeve, which can aid with handling and installation.

Suitable for a wide variety of applications, including aerospace, military, industrial and energy. Marker sleeves meet the mark permanence requirements of AS5942 and MIL 202 Method 215.

TMS-SCE meets the material performance requirements of the AMS SAE DTL 23053/5 specification.

TMS-SCE-2X sleeves are fabricated from AMS SAE DTL 23053/5 tubing that meets material performance of class 1 and 3.

TMS-SCE and TTMS Heat Shrink Identification products are available as part of a complete identification system. The system comprises specific printers, thermal transfer ribbons and WINTOTAL software.

TMS-SCE MILITARY GRADE

HEAT SHRINK CABLE IDENTIFICATION SYSTEM

Features

- Self-extinguishing, non-flame propagating
- Resistant to key Military and Aerospace fluids (defined by RW-2511)
- Military grade performance
- Can be laser marked for superior performance
- Pre-termination Cable Identification
- Sleeve diameters from 2.4mm to 57.15mm (3/32 to 2-1/4)
- TMS-SCE (3:1 Shrink ratio, see table for exceptions)
- TMS-SCE-2X (2:1 shrink ratio)

Product Compliance

- TMS-SCE fully complies with 2011/65/EU RoHS II directive, and Regulation (EC) number 1907/2006 (REACH)
- Further information and a downloadable declaration covering RoHS and REACH compliance can be found at the TE Product Compliance Support Centre: <http://www.te.com/usa-en/utilities/product-compliance.html>

Temperature Rating

- -55°C to 135°C (-67°F to 275°F)

Shelf Life

- Refer to TE document 408-121006 Cable Identification Shelf Life Document

Application



Specifications / Approvals

TE Connectivity Standard RW-2511 Specification for TMS-SCE products

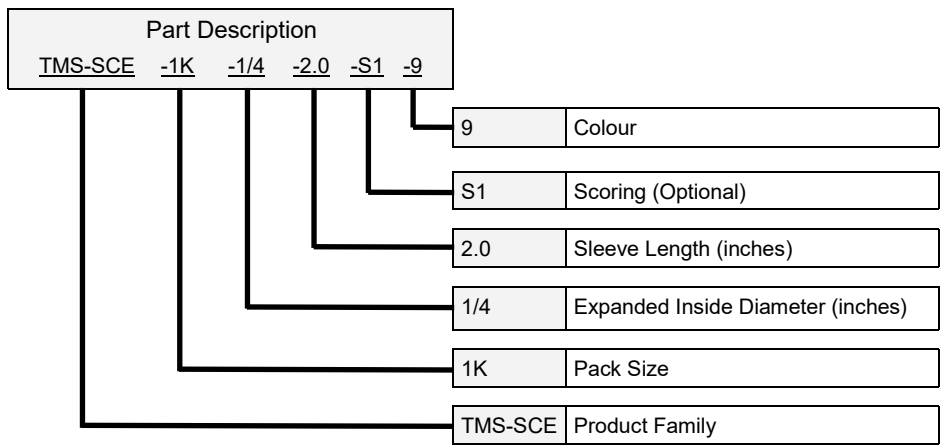
Rail EN45545-2, Railway applications - Fire protection on railway vehicles, Part 2: Requirements for fire behaviour of materials and components
Fire Hazard Classification 1, 2 and 3, in accordance with requirement set R24
NFPA 130 Standard for Fixed Guideway Transit and Passenger Rail Systems, Fire protection requirements, Interior Fire Propagation Resistance
Federal Railroad Administration, DOT, Appendix B to Part 238, Test Methods and Performance Criteria for the Flammability and Smoke Emission Characteristics of Materials used in Passenger Cars and Locomotive Cabs
SHAZAINENSHI, Japan Railway Rolling Stock & Machinery Association 2003 Classification 'Flame Retardant' Serial number 2015-163K

Military SAE-AMS-23053/5 Insulation Sleeving, Electrical, Heat Shrinkable, Polyolefin, Semi-Rigid, Crosslinked.

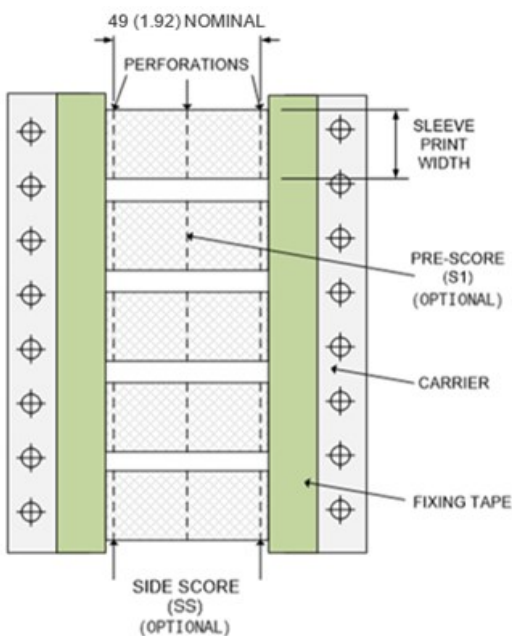
- TMS-SCE Class 1 Material performance
- TMS-SCE-2X fabricated from Class 1 and 3 material performance tubing.

Industrial CSA Standard C22.2 No 198.1 Class Number 9032-01
INSULATING DEVICES AND MATERIALS-Insulating Tubing and Sleeving,
File reference 31929
UL Certification, Tubing, Extruded Insulating Component
File reference YDPU2.E35586

Where possible, TE have tested product as a finished item, including the print. Operational tests are followed by an assessment of mark adherence to validate fit form and function. Further details can be found in TE standard RW-2511.



Available Options



Dimensions in mm (inches)

Pre-scoring	Perforated score to produce multiple marker sleeves from each sleeve				
	1 Pre-score	Code	S1		
	2 Pre-scores	Code	S2		
	3 Pre-scores	Code	S3		
Packaging sizes	TMS-SCE	TMS-SCE-2X			
	<blank>	Available for all sizes	All Sizes		
	250 pieces				
	0.5	3/4 and above	Not available		
	500 pieces				
	1K	All Sizes	All Sizes		
	1000 pieces				
2.5K	3/32 to 3/8	3/32 to 3/8			
2500 pieces					
5K	3/32 to 3/8	Not available			
5000 pieces					
Colors	Black	Pink	Red	Orange	Yellow
	0	2L	2	3	4
	Green	Blue	Violet	Grey	White
	5	6	7	8	9

Specify product name, pack size (leave blank if 250 pieces are required), sleeve size, sleeve length, pre-score (leave blank if not required) and colour

Ordering Example: TMS-SCE-1K-1/4-2.0-S1-9

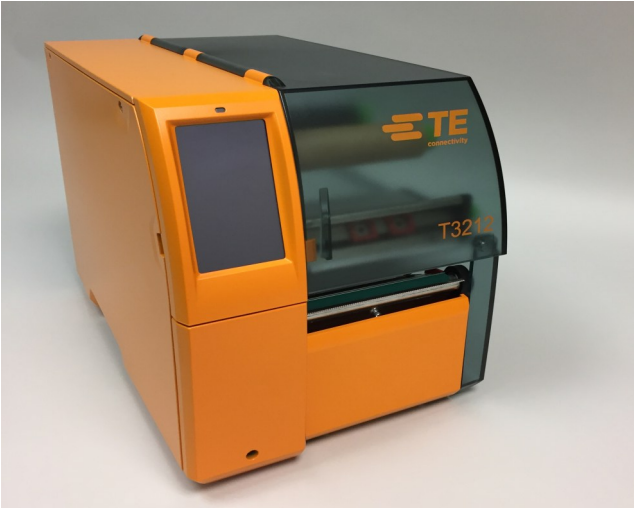
To maximise print contrast, colors are based on pastel shades. TMS-SCE-2X and TMS-SCE are available in White and Yellow as standard other colors available on request.

Ordering Information

Ordering description	Inside diameter				Recovered Wall Thickness (nominal)	Weight (nominal)	Cable Diameter Recommended use range			
	As supplied (minimum)		After recovery (maximum)				mm	g	Recommended use range	
	mm	inches	mm	inches	mm	inches				
TMS-SCE - <pack size> - 3/32 – 2.0 - <score> - <color>	2.38	0.093	0.79	0.031	0.58	0.15	0.8 to 1.9	0.032 to 0.075		
TMS-SCE - <pack size> - 1/8 – 2.0 - <score> - <color>	3.18	0.125	1.07	0.042	0.58	0.20	1.1 to 2.6	0.044 to 0.105		
TMS-SCE - <pack size> - 3/16 – 2.0 - <score> - <color>	4.76	0.187	1.57	0.062	0.58	0.27	1.7 to 4.0	0.069 to 0.160		
TMS-SCE - <pack size> - 1/4 – 2.0 - <score> - <color>	6.35	0.250	2.11	0.083	0.58	0.35	2.3 to 5.4	0.091 to 0.215		
TMS-SCE - <pack size> - 3/8 – 2.0 - <score> - <color>	9.53	0.375	3.18	0.125	0.61	0.50	3.4 to 8.1	0.137 to 0.320		
TMS-SCE - <pack size> - 1/2 – 2.0 - <score> - <color>	12.70	0.500	4.22	0.166	0.61	0.68	4.6 to 10.7	0.183 to 0.425		
TMS-SCE - <pack size> - 3/4 – 2.0 - <score> - <color>	19.05	0.750	6.35	0.250	0.64	1.20	6.9 to 16.2	0.275 to 0.640		
TMS-SCE - <pack size> - 1 – 2.0 - <score> - <color>	25.40	1.000	8.46	0.333	0.64	1.54	9.2 to 21.5	0.366 to 0.850		
TMS-SCE - <pack size> - 1-1/2 ¹ – 2.0 - <score> - <color>	38.10	1.500	19.05	0.750	0.51	2.75	20.9 to 33.0	0.825 to 1.300		
TMS-SCE - <pack size> - 2 ¹ – 2.0 - <score> - <color>	50.80	2.000	25.40	1.000	0.64	4.73	27.9 to 44.9	1.100 to 1.770		
TMS-SCE - <pack size> - 2 1/4 – 2.0 - <score> - <color>	57.15	2.250	19.05	0.750	0.76	4.21	22.3 to 50.8	0.879 to 2.000		
TMS-SCE-2X - <pack size> - 3/32 – 2.0 - <score> - <color>	2.38	0.093	1.17	0.046	0.64	0.20	1.2 to 2.1	0.047 to 0.082		
TMS-SCE-2X - <pack size> - 1/8 – 2.0 - <score> - <color>	3.18	0.125	1.58	0.062	0.64	0.28	1.6 to 2.4	0.062 to 0.094		
TMS-SCE-2X - <pack size> - 3/16 – 2.0 - <score> - <color>	4.76	0.187	2.36	0.093	0.64	0.36	2.4 to 4.0	0.097 to 0.158		
TMS-SCE-2X - <pack size> - 1/4 – 2.0 - <score> - <color>	6.35	0.250	3.18	0.125	0.64	0.59	3.2 to 5.12	0.126 to 0.202		
TMS-SCE-2X - <pack size> - 3/8 – 2.0 - <score> - <color>	9.53	0.375	4.75	0.187	0.64	0.85	4.8 to 8.0	0.188 to 0.300		
TMS-SCE-2X - <pack size> - 1/2 – 2.0 - <score> - <color>	12.70	0.500	6.35	0.250	0.64	1.15	6.4 to 10.2	0.250 to 0.401		
TMS-SCE-2X - <pack size> - 3/4 – 2.0 - <score> - <color>	19.05	0.750	9.53	0.375	0.76	2.06	9.5 to 15.3	0.375 to 0.600		
TMS-SCE-2X - <pack size> - 1 – 2.0 - <score> - <color>	25.40	1.000	12.70	0.500	0.89	2.53	12.7 to 20.3	0.500 to 0.800		

¹ These sizes are 2:1 shrink ratio



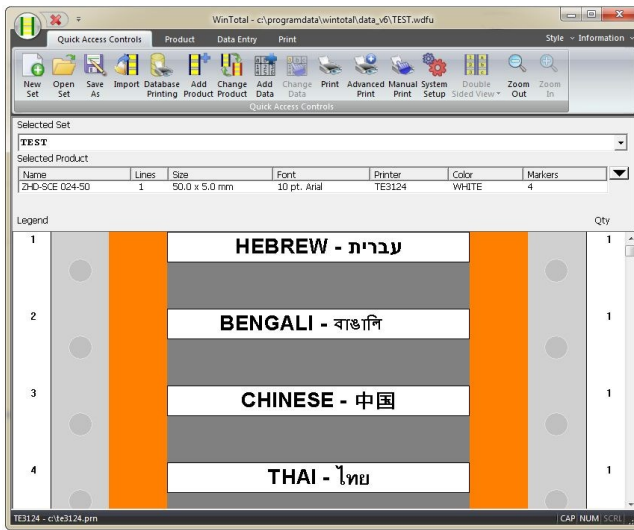


Printer Information

Print quality and print performance can only be guaranteed when specific TE printer and ribbons are used.

The current list of printers and ribbons can be found in TE document 411-121005 'Identification Printer Product Ribbon Matrix'. This document can be found in 'Access Our Tools':

<http://www.te.com/usa-en/utilities/access-product-tools>

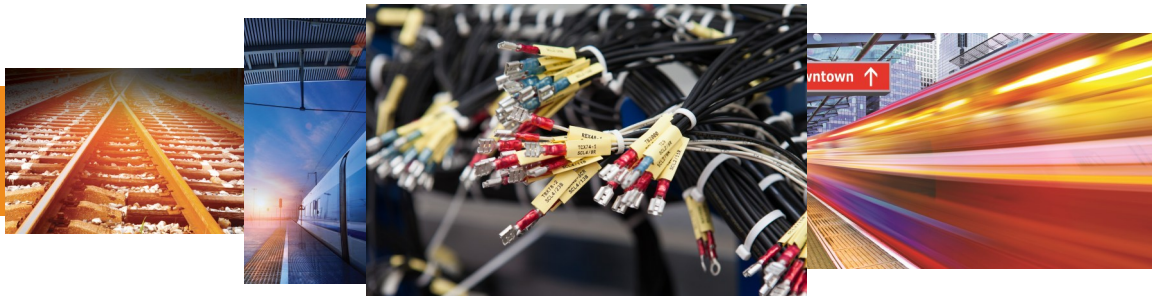


Software

WINTOTAL software, available to download for a 14 day evaluation period from the Identification Printer Software page:

<http://www.te.com/wintotal>

Contact a TE representative for further information



www.te.com

TE Connectivity, TE Connectivity (logo) and Every Connection Counts are trademarks. All other logos, products and/or company names referred to herein might be trademarks of their respective owners.

The information given herein, including drawings, illustrations and schematics which are intended for illustration purposes only, is believed to be reliable. However, TE Connectivity makes no warranties as to its accuracy or completeness and disclaims any liability in connection with its use. TE Connectivity's obligations shall only be as set forth in TE Connectivity's Standard Terms and Conditions of Sale for this product and in no case will TE Connectivity be liable for any incidental, indirect or consequential damages arising out of the sale, resale, use or misuse of the product. Users of TE Connectivity products should make their own evaluation to determine the suitability of each such product for the specific application.

© 2025 TE Connectivity Ltd. family of companies All Rights Reserved.

