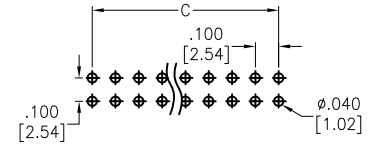
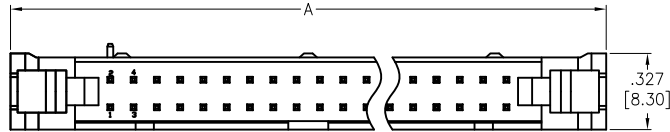
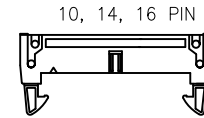


APPROVED: \_\_\_\_\_  
 DATE: \_\_\_\_\_ TITLE: \_\_\_\_\_

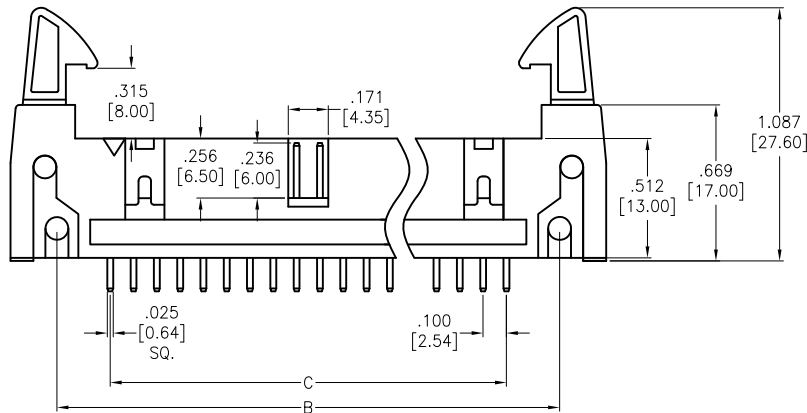
Rev	AWO #	Description	Date	Appr
-		RELEASED	6/22/17	
A		UPDATE DRAWING	12/20/19	OW/TY



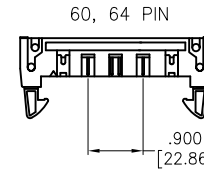
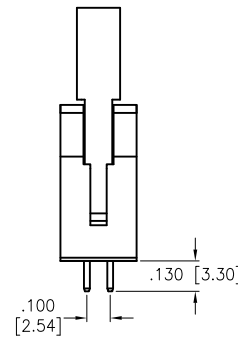
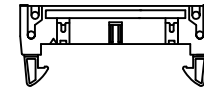
RECOMMENDED PCB LAYOUT



10, 14, 16 PIN



20, 24, 26, 30, 34, 40, 50 PIN



60, 64 PIN

Positions: 06 thru 64  
 A= .100 [2.54] x No. of Positions per Row + .756 [19.20]  
 B= .100 [2.54] x No. of Positions per Row + .354 [9.00]  
 C= .100 [2.54] x No. of Spaces

**SPECIFICATIONS:**

Material:  
 Insulator: PBT, Glass reinforced, rated UL 94V-0  
 Insulator color: Black  
 Contacts: Brass  
 Plating:  
 Gold flash over Nickel underplate overall  
 Electrical:  
 Current rating: 3 Amp  
 Contact resistance: 20 mohms max  
 Insulation resistance: 1,000 Mohms min  
 Dielectric withstanding voltage: 500 VAC  
 Temperature Rating:  
 -40°C to +105°C  
 Environmental:  
 Lead free, RoHS compliant.



UNLESS OTHERWISE SPECIFIED ALL DIMENSIONS ARE INCHES [MM] TOLERANCES: EXCEPT AS NOTED		<b>ADAM TECH</b>		909 Rahway Avenue, Union, NJ 07083 Phone: 908-687-5000 Fax: 908-687-5710	
INCHES		HOLES		TITLE	
.X ± .10	Ø.X ± .10	.100 [2.54] SHROUDED HEADER W/ LONG LATCHES, 2 ROW			
.XX ± .020	Ø.XX ± .015	VERTICAL, GOLD PLATED, MULTIPLE POLARIZATION			
.XXX ± .015	Ø.XXX ± .010	APPROVALS	DATE	SIZE	PART NO.
DRAWN	HR	6/22/17		X	MHR-A-XX-VUAL-MP
CHECKED	MY	6/22/17		REV.	A
APPROVED				REF:	S00111C
				SCALE:	NTS
				SHEET	1 OF 1