



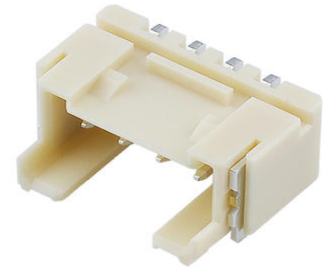
Part Number : [2159310470](#)

Product Description : 2.50mm Pitch, Mini-Lock PCB Header, Single Row, Vertical, Surface Mount, Tin Plating, 4 Circuits, Natural, Tape and Reel

Series Number : 215931

Status : Active

Product Category : PCB Headers and Receptacles



Documents & Resources

Drawings

[2159310470_sd.pdf](#)

3D Models and Design Files

[STEP AP242](#)

[SOLIDWORKS](#)

[Creo](#)

[Symbol and Footprint \(Multi-Format\)](#)

[2159310470.dxf](#)


Specifications

[2159319200-SPK-200.pdf](#)

[511630000-PS-000.pdf](#)

Product Environment Compliance

Compliance

GADSL/IMDS	Compliant with Exemption 44; 33
China RoHS	 per SJ/T 11365-2006
EU ELV	Not Relevant
Low-Halogen Status	Not Low-Halogen per IEC 61249-2-21
REACH SVHC	Not Contained per D(2025)4165-DC (25 June 2025)
EU RoHS	Compliant per EU 2015/863

Compliance Statements

- EU RoHS
- REACH SVHC
- Low-Halogen

Industry Documents

- IPC 1752A Class C
- IPC 1752A Class D
- Molex Product Compliance Declaration
- IEC-62474
- chemSHERPA (xml)

Substances of Interest

- PFAS

EU RoHS Certificate of Compliance

Additional Product Compliance Information

Part Details

General

Status	Active
Category	PCB Headers and Receptacles
Series	215931
Description	2.50mm Pitch, Mini-Lock PCB Header, Single Row, Vertical, Surface Mount, Tin Plating, 4 Circuits, Natural, Tape and Reel
Application	Signal, Wire-to-Board
Component Type	PCB Header
Product Name	Mini-Lock
UPC	193264834617

Agency

UL	E29179
----	--------

Electrical

Current - Maximum per Contact	5.0A
Voltage - Maximum	250V

Physical

Breakaway	No
Circuits (Loaded)	4
Circuits (maximum)	4
Color - Resin	Natural
Durability (mating cycles max)	30
First Mate / Last Break	No
Glow-Wire Capable	Yes
Guide to Mating Part	No
Keying to Mating Part	Yes
Lock to Mating Part	Yes
Material - Metal	Brass
Material - Plating Mating	Matte Tin
Material - Plating Termination	Matte Tin
Material - Resin	Polyamide
Net Weight	1067.000/mg
Number of Rows	1
Orientation	Vertical
Packaging Type	Embossed Tape on Reel
Pitch - Mating Interface	2.50mm
Pitch - Termination Interface	2.50mm
Plating min - Mating	1.000µm
Plating min - Termination	1.000µm
Polarized to Mating Part	Yes
Polarized to PCB	Yes
Shrouded	Fully
Temperature Range - Operating	-55° to +105°C
Termination Interface Style	Surface Mount

Mates With / Use With

Mates with Part(s)

Description	Part Number
Mini-Lock Single Row Receptacle Housings	<u>51163</u>

This document was generated on Sep 14, 2025