



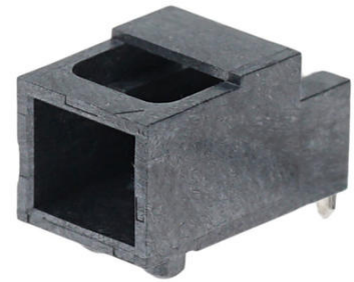
**Part Number :** [1510654060](#)

**Product Description :** 2.00mm Pitch, Milli-Grid PCB Header, Single Row, Right-Angle, Through Hole, 2.50µm Tin (Sn) Plating, with Peg, 3.60mm PC Tail Length, 10 Circuits, Tube

**Series Number :** 151065

**Status :** Active

**Product Category :** PCB Headers and Receptacles



---

## Documents and Resources

### Drawings

[1510654060 sd.pdf](#)

[PK-151062-0001-001.pdf](#)

### 3D Models and Design Files

[STEP AP242](#)

[SOLIDWORKS](#)

[Creo](#)

[Symbol and Footprint \(Multi-Format\)](#)

### Specifications


[503940001-AS-000.pdf](#)

[PS-151062-0001-001.pdf](#)

---

## Product Environment Compliance

### Compliance

GADSL/IMDS	Not Relevant
China RoHS	 per SJ/T 11365-2006
EU ELV	Compliant per 2000/53/EC
Low-Halogen Status	Low-Halogen per IEC 61249-2-21
REACH SVHC	Not Contained per D(2025)7771-DC (04 Feb 2026)
EU RoHS	Compliant per EU 2015/863

### Compliance Statements

- EU RoHS
- REACH SVHC
- Low-Halogen

### Industry Documents

- IPC 1752A Class C
- IPC 1752A Class D
- Molex Product Compliance Declaration
- IEC-62474
- chemSHERPA (xml)

### Substances of Interest

- PFAS

### EU RoHS Certificate of Compliance

### Additional Product Compliance Information

---

## Part Details

### General

Status	Active
Category	PCB Headers and Receptacles
Series	151065
Description	2.00mm Pitch, Milli-Grid PCB Header, Single Row, Right-Angle, Through Hole, 2.50µm Tin (Sn) Plating, with Peg, 3.60mm PC Tail Length, 10 Circuits, Tube
Application	Wire-to-Board
Comments	See Product Specification for maximum current rating by wire AWG
Component Type	PCB Header
Product Name	Milli-Grid
UPC	889056635912

### Agency

CSA	LR19980
UL	E29179

### Electrical

Current - Maximum per Contact	2.5A
Voltage - Maximum	125V AC

## Physical

Breakaway	No
Circuits (Loaded)	10
Circuits (maximum)	10
Color - Resin	Black
Durability (mating cycles max)	25
First Mate / Last Break	No
Flammability	94V-0
Gender	Male
Glow-Wire Capable	No
Guide to Mating Part	No
Keying to Mating Part	No
Lock to Mating Part	Yes
Material - Metal	Copper Alloy
Material - Plating Mating	Tin
Material - Plating Termination	Tin
Material - Resin	Liquid Crystal Polymer (LCP)
Mounting Style	Through Hole
Net Weight	1.026/g
Number of Rows	1
Orientation	Right Angle
Packaging Type	Tube
PCB Locator	Yes
PCB Retention	Yes
PCB Thickness - Recommended	2.50mm
PC Tail Length	3.60mm
Pitch - Mating Interface	2.00mm
Pitch - Termination Interface	2.00mm
Plating min - Mating	2.500µm
Plating min - Termination	2.000µm
Polarized to Mating Part	Yes
Polarized to PCB	Yes

Shrouded	Shrouded
Stackable	No
Temperature Range - Operating	-40° to +70°C
Termination Interface Style	Through Hole

### Solder Process Data

Max-Duration	10
Lead-Free Process Capability	WAVE
Max-Cycle	1
Max-Temp	260

---

### Mates With / Use With

#### Mates with Part(s)

Description	Part Number
Milli-Grid Single Row Receptacle Housings	<u>151100</u>

---

This document was generated on May 27, 2026