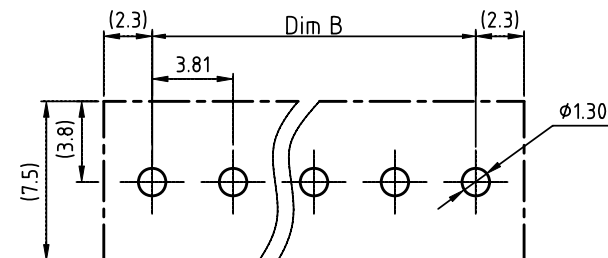
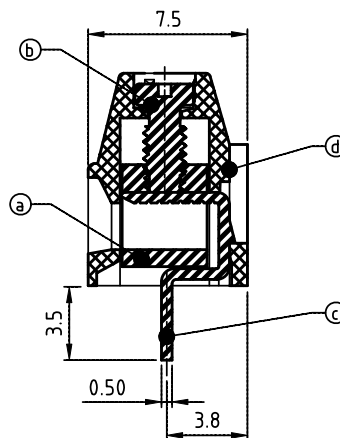
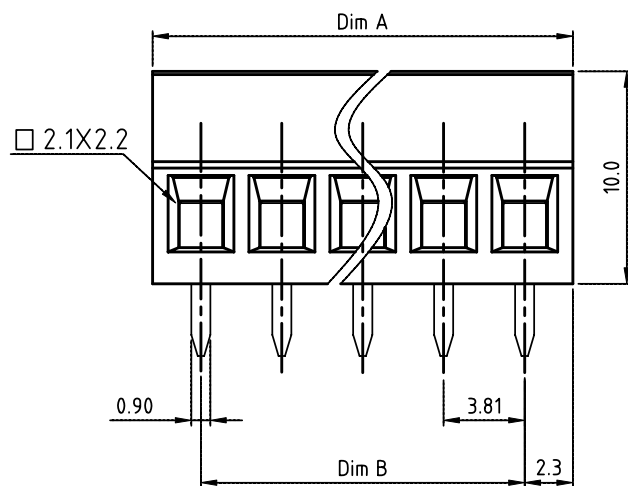
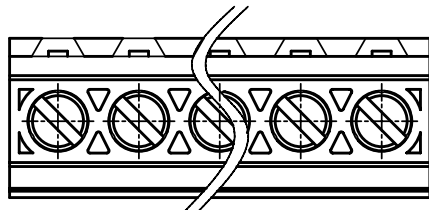


PRODUCT NUMBER	PITCH
EDxx31x000J0G	3.81mm



RECOMMENDED P.C.B LAYOUT
TOP VIEW

Material

- Item ③ Clamp : Brass , Ni plated
- Item ④ Terminal screw : Steel Zinc plating: "–" slot type
- Item ⑤ solder pin : Brass , Tin plated
- Item ⑥ Terminal housing : Thermoplastic (UL94V-0)

Electrical cULus

- Voltage rating: 300VAC
- Current rating: 8A
- Wire range:
- Solid wire(AWG): 16-24
- Stranded wire(AWG): 16-24
- Torque(Lb-In): 2.17
- Screw: M2
- Wire strip length: 6-7mm
- Withstanding Voltage: 1.6KV
- Operating temperature: -40°C to +115°C
- Soldering temperature: 260°C±5°C/5 Sec
- Safety Approval: cULus

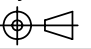
N=Number of poles
Dimension A & B

Dim A	(N-1)×3.81+4.55
Dim B	(N-1)×3.81

Poles	Dim A & B Tolerance
2P-4P	±0.15
5P-8P	±0.20
9P-16P	±0.30
17P-24P	±0.40

PART NO.: ED xx 3 1 x 0 00J0 G

Solid Block	No. of poles	Color	RoHS compliant (lead<4%) In copper Alloy
0	2	Black (RAL9005)	
02	2 poles	Red (RAL3001/D)	
03	3 poles	Orange(RAL2011/P)	
...	...	Yellow(RAL1018/A)	
5	...	Green(RAL6018/T)	
24	24 poles	Blue (RAL5015/A)	
8		Grey(RAL7035/D)	
9		White(RAL1102)	
C		Green(RAL6018/U)	

mat'l. code				surface ASME Y14.5	tolerance ASME Y14.5	projection	product family
ltr	ecn	no	dr	date	tolerances unless otherwise specified		TERMINAL BLOCK
					angles	MM	title
					X±0.5		TERMINAL BLOCK
					X.X±0.3		scale
					X*±1°		TERMINAL BLOCK
					dr	EVIN ZHONG 040714	sheet 1 of 1 size
					enr	EVIN ZHONG 040714	EDxx31x000J0G
					chr	HANKE FENG 040714	A4
					appd	SHI JUN 040714	type
sheet index	revision	A					CUSTOMER Drawing