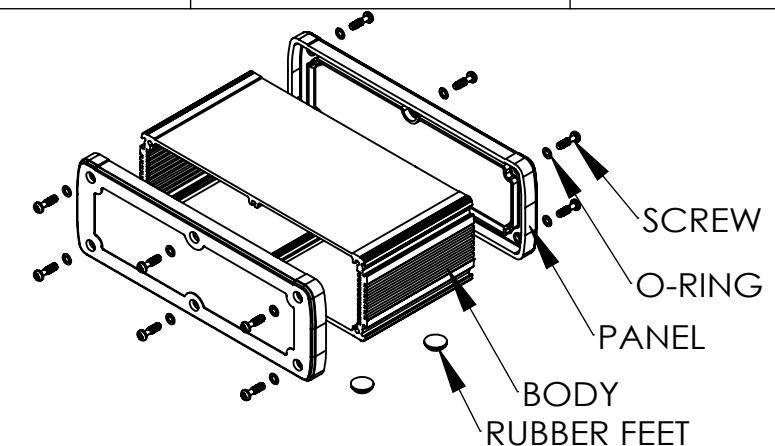
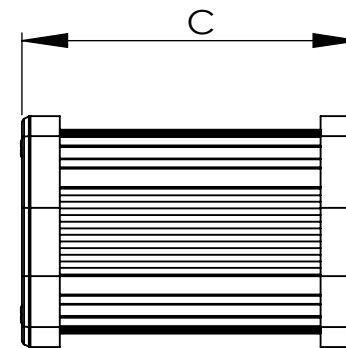
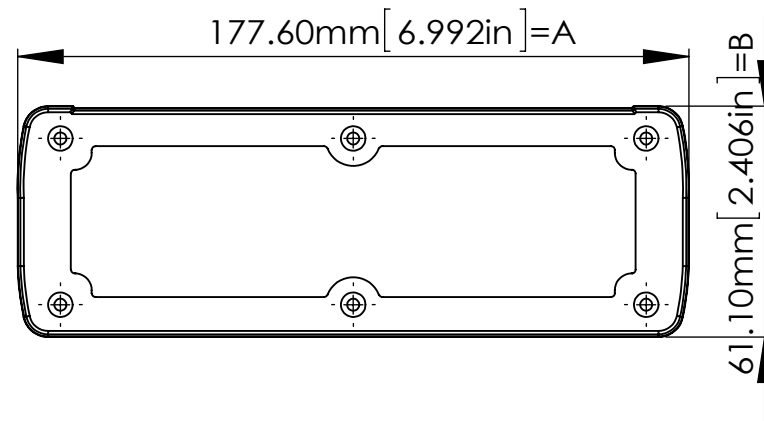
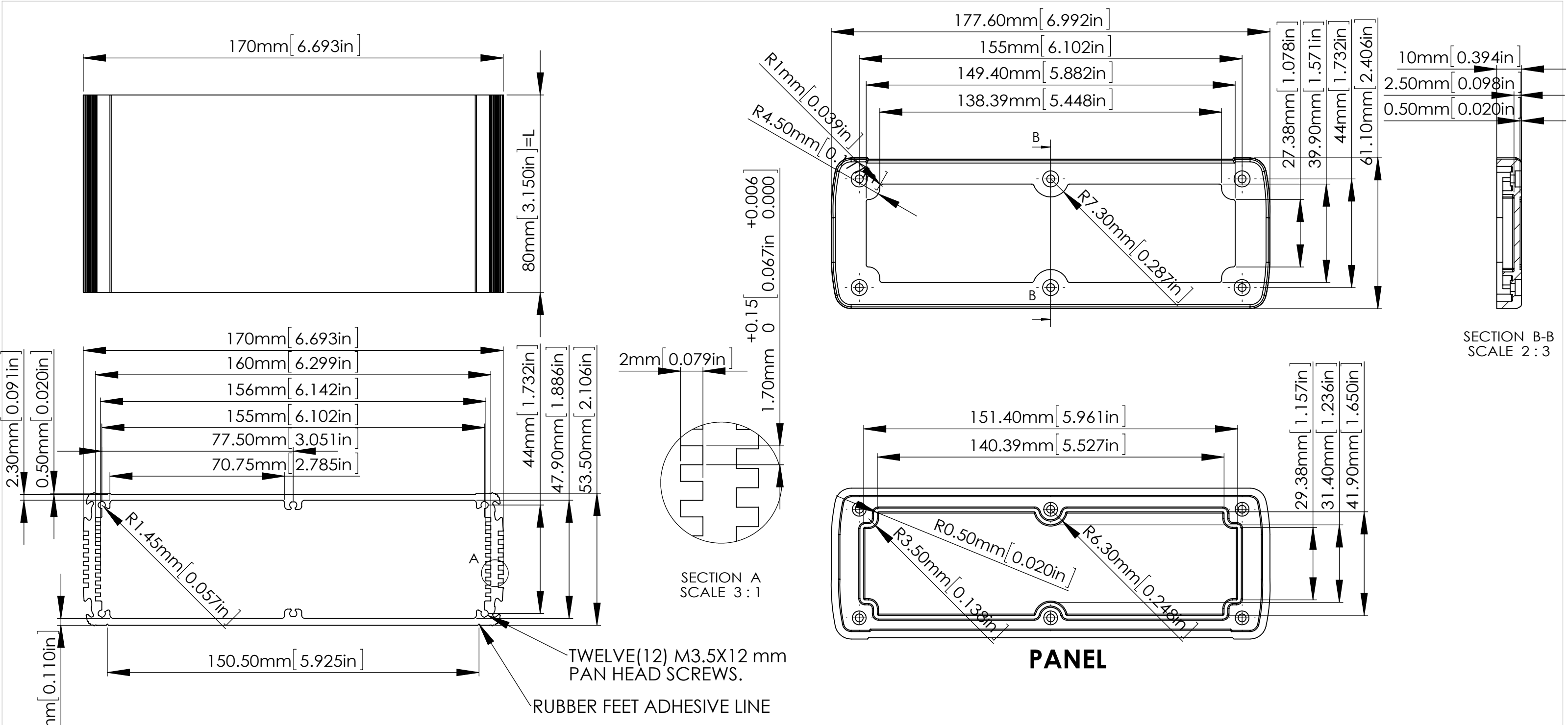


| ITEM NO | BODY | PANEL | O-RING | RUBBER FEET | SCREW | EXTERNAL DIMENSION(mm) AxBXC |
|------------------|--|---|---|---|--|---------------------------------|
| ALUG708GD080-C | ALUMINIUM EXTRUSION 6063/ GOLDEN ANODIZED(PANTONE 4675C) | UL94-V0 OF POLYCARBONATE/CLEAR | Ø6X0.5 mm MATERIAL:PC COLOR:CLEAR | Ø12X5 mm MATERIAL:RUBBER (GAINTA ITEM NO:RF-1004) COLOR:BLACK | M3.5X12 mm MATERIAL:STAINLESS SUS 304 COLOR:UNFINISHED | 177.6X61.1X89 mm |
| ALUG708SR080-C | ALUMINIUM EXTRUSION 6063/ SILVER ANODIZED(PANTONE 877C) | UL94-V0 OF POLYCARBONATE/CLEAR | | | | |
| ALUG708RD080-IR | ALUMINIUM EXTRUSION 6063/ RED ANODIZED(PANTONE 187C) | UL94-V0 OF POLYCARBONATE/TRANSLUCENT RED | | | | |
| ALUG708BU080-CBU | ALUMINIUM EXTRUSION 6063/ BLUE ANODIZED(PANTONE 306C) | UL94-V0 OF POLYCARBONATE/TRANSLUCENT BLUE | | | | |
| ALUG708BK080-BK | ALUMINIUM EXTRUSION 6063/ BLACK ANODIZED(PANTONE BLACK U) | UL94-V0 OF POLYCARBONATE/BLACK | | | | |
| ALUG708GD120-C | ALUMINIUM EXTRUSION 6063/ GOLDEN ANODIZED(PANTONE 4675C) | UL94-V0 OF POLYCARBONATE/CLEAR | Ø6X0.5 mm MATERIAL:PC COLOR:CLEAR | Ø12X5 mm MATERIAL:RUBBER (GAINTA ITEM NO:RF-1004) COLOR:BLACK | M3.5X12 mm MATERIAL:STAINLESS SUS 304 COLOR:UNFINISHED | 177.6X61.1X129 mm |
| ALUG708SR120-C | ALUMINIUM EXTRUSION 6063/ SILVER ANODIZED(PANTONE 877C) | UL94-V0 OF POLYCARBONATE/CLEAR | | | | |
| ALUG708RD120-IR | ALUMINIUM EXTRUSION 6063/ RED ANODIZED(PANTONE 187C) | UL94-V0 OF POLYCARBONATE/TRANSLUCENT RED | | | | |
| ALUG708BU120-CBU | ALUMINIUM EXTRUSION 6063/ BLUE ANODIZED(PANTONE 306C) | UL94-V0 OF POLYCARBONATE/TRANSLUCENT BLUE | | | | |
| ALUG708BK120-BK | ALUMINIUM EXTRUSION 6063/ BLACK ANODIZED(PANTONE BLACK U) | UL94-V0 OF POLYCARBONATE/BLACK | | | | |
| ALUG708GD160-C | ALUMINIUM EXTRUSION 6063/ GOLDEN ANODIZED(PANTONE 4675C) | UL94-V0 OF POLYCARBONATE/CLEAR | Ø6X0.5 mm MATERIAL:PC COLOR:CLEAR | Ø12X5 mm MATERIAL:RUBBER (GAINTA ITEM NO:RF-1004) COLOR:BLACK | M3.5X12 mm MATERIAL:STAINLESS SUS 304 COLOR:UNFINISHED | 177.6X61.1X169 mm |
| ALUG708SR160-C | ALUMINIUM EXTRUSION 6063/ SILVER ANODIZED(PANTONE 877C) | UL94-V0 OF POLYCARBONATE/CLEAR | | | | |
| ALUG708RD160-IR | ALUMINIUM EXTRUSION 6063/ RED ANODIZED(PANTONE 187C) | UL94-V0 OF POLYCARBONATE/TRANSLUCENT RED | | | | |
| ALUG708BU160-CBU | ALUMINIUM EXTRUSION 6063/ BLUE ANODIZED(PANTONE 306C) | UL94-V0 OF POLYCARBONATE/TRANSLUCENT BLUE | | | | |
| ALUG708BK160-BK | ALUMINIUM EXTRUSION 6063/ BLACK ANODIZED(PANTONE BLACK U) | UL94-V0 OF POLYCARBONATE/BLACK | | | | |
| ALUG708GD200-C | ALUMINIUM EXTRUSION 6063/ GOLDEN ANODIZED(PANTONE 4675C) | UL94-V0 OF POLYCARBONATE/CLEAR | Ø6X0.5 mm MATERIAL:PC COLOR:CLEAR | Ø12X5 mm MATERIAL:RUBBER (GAINTA ITEM NO:RF-1004) COLOR:BLACK | M3.5X12 mm MATERIAL:STAINLESS SUS 304 COLOR:UNFINISHED | 177.6X61.1X209 mm |
| ALUG708SR200-C | ALUMINIUM EXTRUSION 6063/ SILVER ANODIZED(PANTONE 877C) | UL94-V0 OF POLYCARBONATE/CLEAR | | | | |
| ALUG708RD200-IR | ALUMINIUM EXTRUSION 6063/ RED ANODIZED(PANTONE 187C) | UL94-V0 OF POLYCARBONATE/TRANSLUCENT RED | | | | |
| ALUG708BU200-CBU | ALUMINIUM EXTRUSION 6063/ BLUE ANODIZED(PANTONE 306C) | UL94-V0 OF POLYCARBONATE/TRANSLUCENT BLUE | | | | |
| ALUG708BK200-BK | ALUMINIUM EXTRUSION 6063/ BLACK ANODIZED(PANTONE BLACK U) | UL94-V0 OF POLYCARBONATE/BLACK | | | | |



| | | | | | | | | | |
|------------------------------------|----|----------|------------|------|----|-------|------------------|-----------|------------|
| 宣又實業有限公司 GAINTA INDUSTRIES LTD. | 繪圖 | DRA'D BY | 日期 | DATE | 材質 | MATE. | 圖名TITLE: | 圖號DWG NO: | 版次REVISED: |
| | | JACKY | 2015/09/01 | | | -- | ALUG708XXXXX-XXX | | A |



| ITEM NO. | L(mm) |
|------------------|--------|
| ALUG708XX080-XXX | 80 mm |
| ALUG708XX120-XXX | 120 mm |
| ALUG708XX160-XXX | 160 mm |
| ALUG708XX200-XXX | 200 mm |

BODY

PANEL

| According to ISO 2768-m | |
|-------------------------|------------|
| Measuring DIM=L | Tolerances |
| 0.5<L<=3.0mm | ±0.1mm |
| 3.0<L<=6.0 mm | ±0.1mm |
| 30.0<L<=120.0 mm | ±0.3mm |
| 120.0<L<=400.0 mm | ±0.5mm |
| 400.0<L<=1000.0 mm | ±0.8mm |

| | | | | | | | | | |
|------------------------------------|----|----------|------------|------|----|-------|------------------|-----------|------------|
| 宣又實業有限公司 GAINTA INDUSTRIES LTD. | 繪圖 | DRA'D BY | 日期 | DATE | 材質 | MATE. | 圖名TITLE: | 圖號DWG NO: | 版次REVISED: |
| | | JACKY | 2015/06/08 | | | -- | ALUG708XXXXX-XXX | | A |