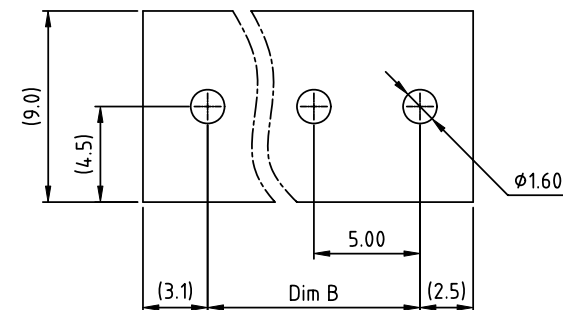
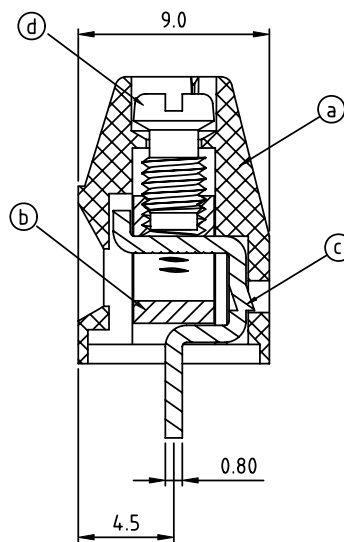
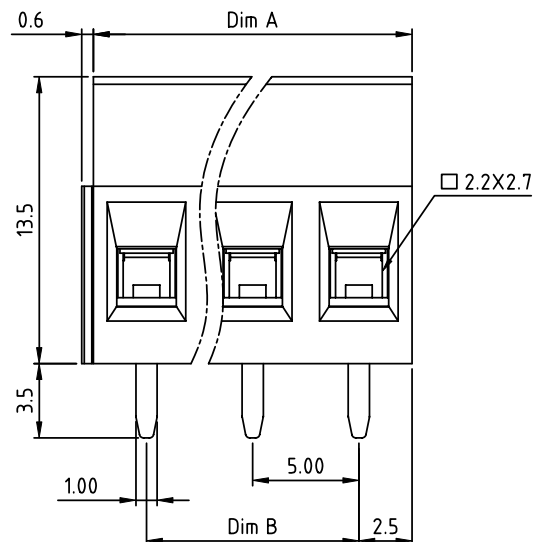
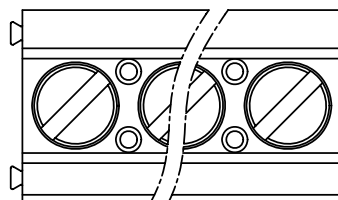


1 | 2

3 |

4



PRODUCT NUMBER	PITCH
Vlxx01x200J0G	5.00 mm


 RECOMMENDED P.C.B LAYOUT  
 TOP VIEW

## Material:

- Item (a) Terminal housing : Thermoplastic (UL 94V-0)
- Item (b) Clamp : Brass ,Ni plated
- Item (c) Solder pin : Brass ,Tin plated
- Item (d) Terminal screw : Steel Zinc plating"- "slot type

## Electrical cULus/FIMKO

- Voltage rating: 300VAC/300VAC
- Current rating: 16A/17.5A
- Wire range: 0.5 ~ 1.5mm<sup>2</sup>
- Solid wire(AWG): 12-28
- Stranded wire(AWG): 12-28
- Torque: 3.5Lb-In./0.5Nm
- Screw: M3
- Wire strip length: 6-7mm
- Withstanding Voltage: 1.6KV/2.5KV
- Operating temperature: -40°C to +115°C
- Soldering temperature: 260°C±5°C/5 Sec
- Safety Approval:  

PART NO.: VI xx 0 1 x 2 00J0 G


N=Number of poles

Dim A=Nx5.0

Dim B=(N-1)x5.0

poles	Dim A	Dim B
2-6p	±0.15	±0.10
7-12p	±0.20	±0.20
13-18p	±0.30	±0.25
19-24p	±0.40	±0.30

End stackable	No. of poles	Color	RoHS compliant
02 2 poles	3	Black (RAL9005)	(lead<4%) In copper Alloy
03 3 poles	4	Red (RAL3001/D)	
...	5	Orange(RAL2011/P)	
24 24 poles	6	Yellow(RAL1018/A)	
	7	Green(RAL6018/T)	
	8	Blue (RAL5015/A)	
	9	Grey(RAL7035/D)	
	9	White(RAL1102)	
	C	Green(RAL6018/U)	

mat'l. code				surface	tolerance	projection	product family			
ltr ecn no dr date				ASME Y14.5	ASME Y14.5		TERMINAL BLOCK			
				tolerances unless otherwise specified		MM	title			
				angles	X.±0.5		TERMINAL BLOCK			
				flatness	X.X±0.3		RISING CLAMP,180D WIRE INLET,END STACKABLE			
				X*±1"	X.XX±0.1	scale	dwg no sheet 1 of 1 size			
				dr	EVIN ZHONG 060614		Vlxx01x200J0G A4			
				enr	EVIN ZHONG 060614					
				chr	HANKE FENG 060614					
				appd	SHI JUN 060614		type CUSTOMER Drawing			
sheet index	revision	B	1							