

Data Conversion

- Analog-to-Digital Converters (ADC)
- Digital-to-Analog Converters (DAC)
- Sw itches and Multiplexers
- Signal Chain μModule
- Data Conversion Evaluation Kits

+ MyLinear Sign Up For a MyLinear Account >

Home > Products > Data Conversion > Data Conversion Evaluation Kits > DC918C-G

+ MyLinear

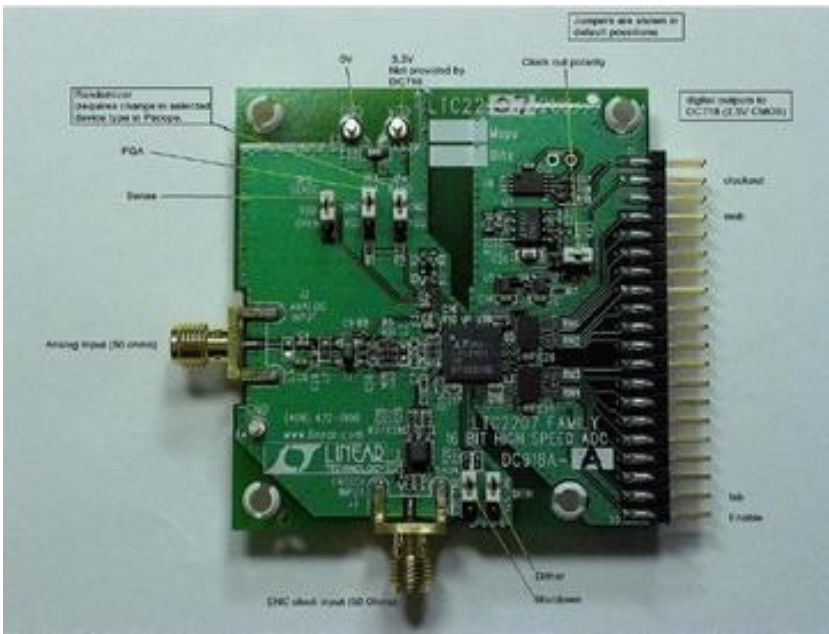
DC918C-G - LTC2204 Evaluation Kit (Fin= 1-70MHz)

FEATURES DESCRIPTION PACKAGING ORDER INFO SIMULATE

FEATURES

- [To be used in conjunction w ith the DC718B - QuickDAACS USB Controller for QuickEval-II Evaluation Kits](#)
- **Disclaimer:** Linear Technology cannot assume responsibility for use of any circuitry other than circuitry entirely embodied in a Linear Technology product. No circuit patent licenses are implied. Linear Technology reserves the right to change the circuitry and specifications w ithout notice at any time.

TYPICAL APPLICATION



[BACK TO TOP](#)

DESCRIPTION

Demonstration circuit 918 supports members of a family of 16/14-Bit 40Msps to 105Msps ADCs. Each assembly features one of the follow ing devices: LTC2207, LTC2207-14, LTC2206, LTC2206-14, LTC2205, LTC2205-14, or LTC2204 high speed, high dynamic range ADCs.

Other members of this family include the LTC2208 16-Bit 130Msps ADC w ith LVDS outputs, as w ell as the LTC2203 and LTC2202 w hich are 16-Bit 25Msps and 10Msps single-ended clock versions. These 7x7mm QFN de- vices are supported by Demonstration Circuit 919 (for single-ended clock input).

Several versions of the 918A demo board supporting the LTC2207 16-Bit and LTC2207-14 14-Bit series of A/D converters are listed in Table 1. Depending on the required resolu- tion, sample rate and input frequency, the DC918 is supplied w ith the appropriate ADC and w ith an optimized input circuit. The cir- cuitry on the analog inputs is optimized for analog input frequencies below 70MHz or from 70MHz to 140MHz. For higher input fre- quencies, contact the factory for support.

[BACK TO TOP](#)

PACKAGING

[BACK TO TOP](#)

ORDER INFO

- Part numbers ending in PBF are [lead free](#). Please contact LTC marketing for information on lead based finish parts.
- Part numbers containing TR or TRM are shipped in [tape and reel or 500 unit mini tape and reel](#), respectively
- Please refer to our [general ordering information](#) or the product datasheet for more details

[BACK TO TOP](#)

APPLICATIONS

[BACK TO TOP](#)

SIMULATE

The QuickEval-II System is a USB-based product demonstration and data acquisition system for use w ith Linear Technology's high performance ADC's. The system consists of a USB Data Acquisition Controller board that connects to individual daughter cards for specific Linear Technology ADCs. The softw are collects and analyzes data from the ADC in both the time and frequency domains and displays relevant parameters for the device being evaluated. The softw are also provides an automatic update feature to keep the softw are current w ith the latest set of device drivers.

- [Click Here to Dow nload Softw are for the QuickEval II System](#)

[BACK TO TOP](#)