

**Product number C12095\_MINNIE-M**

Family	Minnie	FWHM	26 degrees
Type	Reflector	Efficiency	92 %
LED	MT-G	cd/Im	-
Color	Metal	Gerber File	Available
Diameter	32.4 mm		
Height	14.75 mm		
Style	Round		
Optic Material	PC		
Holder Material	-		
Fastening	["glue"]		
Status	Production ready		

**Product number CA12239\_MINNIE-M**

Family	Minnie	FWHM	26 degrees
Type	RefAssy	Efficiency	-
LED	MT-G	cd/Im	-
Color	Black	Gerber File	Available
Diameter	35 mm		
Height	15.8 mm		
Style	Round		
Optic Material	-		
Holder Material	-		
Fastening	["tape"]		
Status	Production ready		

**Product number C11862\_MINNIE-W**

Family	Minnie	FWHM	36 degrees
Type	Reflector	Efficiency	92 %
LED	MT-G	cd/Im	-
Color	Metal	Gerber File	Available
Diameter	32.4 mm		
Height	14.75 mm		
Style	Round		
Optic Material	PC		
Holder Material	-		
Fastening	["glue"]		
Status	Production ready		

**Product number CA12096\_MINNIE-W**

Family	Minnie	FWHM	36 degrees
Type	RefAssy	Efficiency	-
LED	MT-G	cd/Im	-
Color	Black	Gerber File	Available
Diameter	35 mm		
Height	15.8 mm		
Style	Round		
Optic Material	-		
Holder Material	-		
Fastening	["tape"]		
Status	Production ready		

**Product number C12097\_MINNIE-WWW**

Family	Minnie	FWHM	74 degrees
Type	Reflector	Efficiency	90 %
LED	MT-G	cd/Im	-
Color	Metal	Gerber File	Available
Diameter	32.4 mm		
Height	14.75 mm		
Style	Round		
Optic Material	PC		
Holder Material	-		
Fastening	["glue"]		
Status	Production ready		

**Product number CA12240\_MINNIE-WWW**

Family	Minnie	FWHM	74 degrees
Type	RefAssy	Efficiency	-
LED	MT-G	cd/Im	-
Color	Black	Gerber File	Available
Diameter	35 mm		
Height	15.8 mm		
Style	Round		
Optic Material	-		
Holder Material	-		
Fastening	["tape"]		
Status	Production ready		

**NOTE: The typical divergence will be changed by different color, chip size and chip position tolerance. The typical total divergence is the full angle measured where the luminous intensity is half of the peak value.**



## PRODUCT DATASHEET

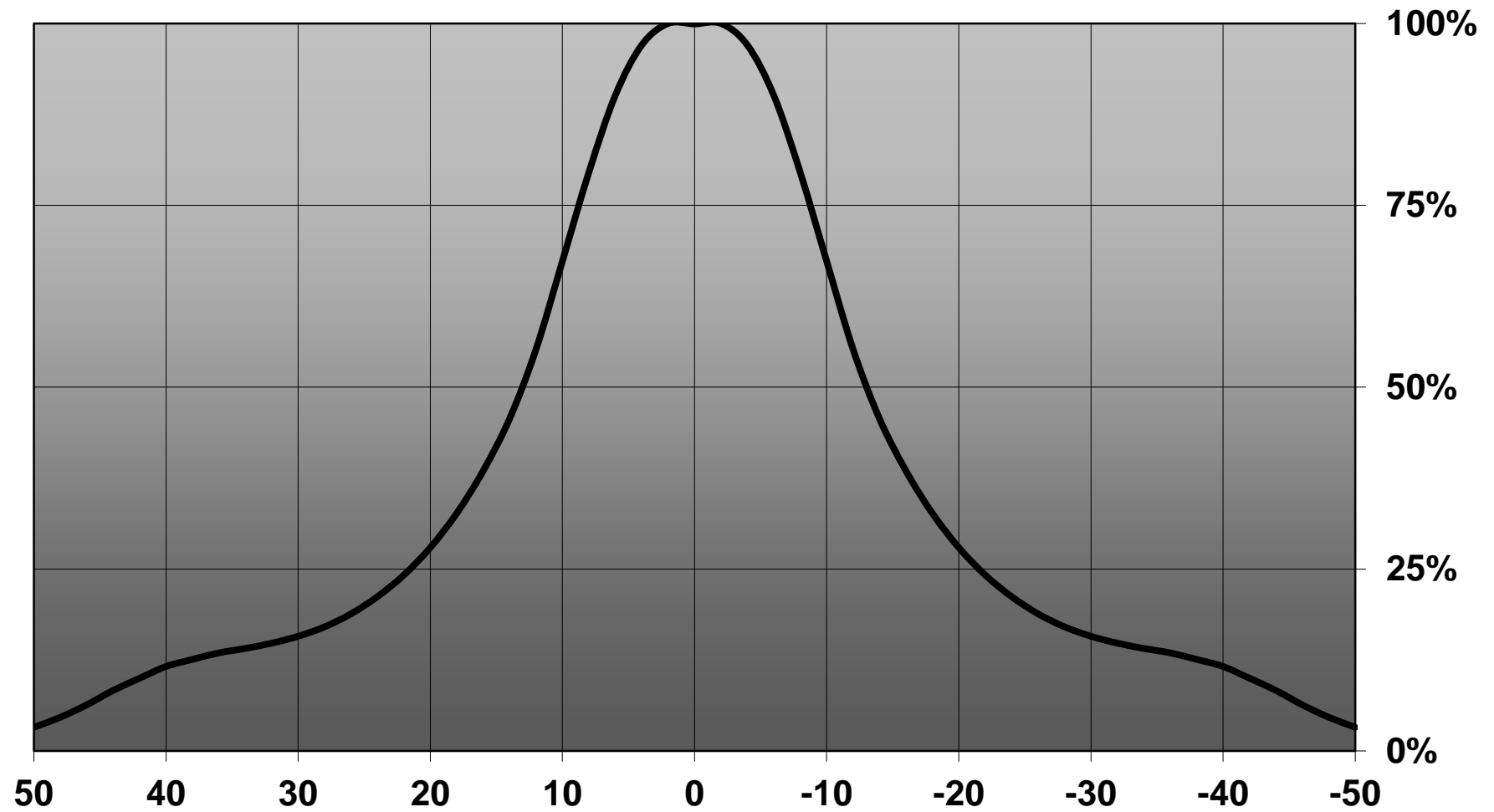
### Minnie series

last update 25/6/2014

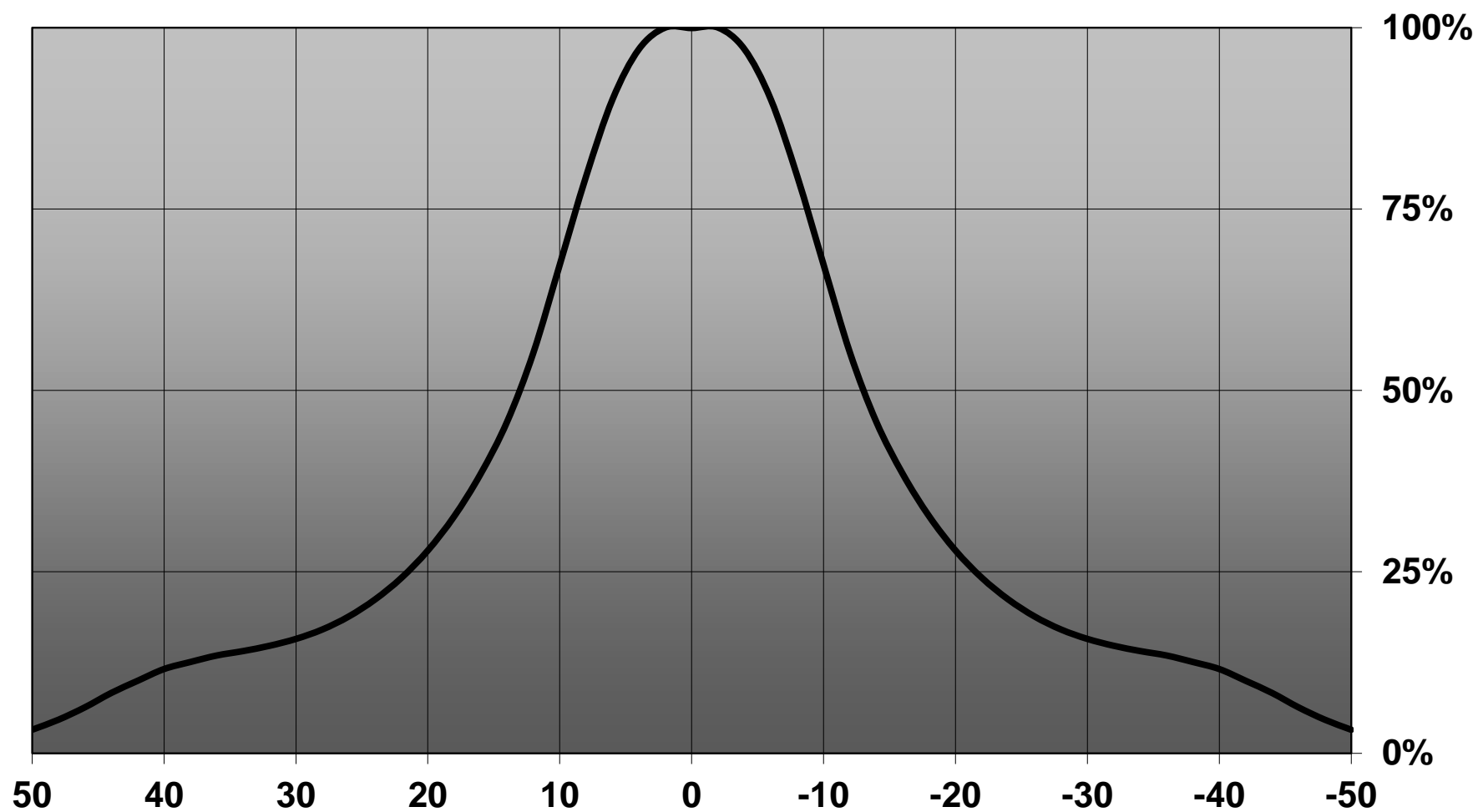
#### GENERAL INFORMATION

- Product series especially designed & optimized for MT-G series of LEDs.
- Special care taken to make light distribution as uniform as possible.
- Reflector is made of aluminium coated PC (120 degrees of Celcius / 248 degrees of Fahrenheit) with protective lacquer (short term 100 degrees of Celcius / 212 degrees of Fahrenheit).

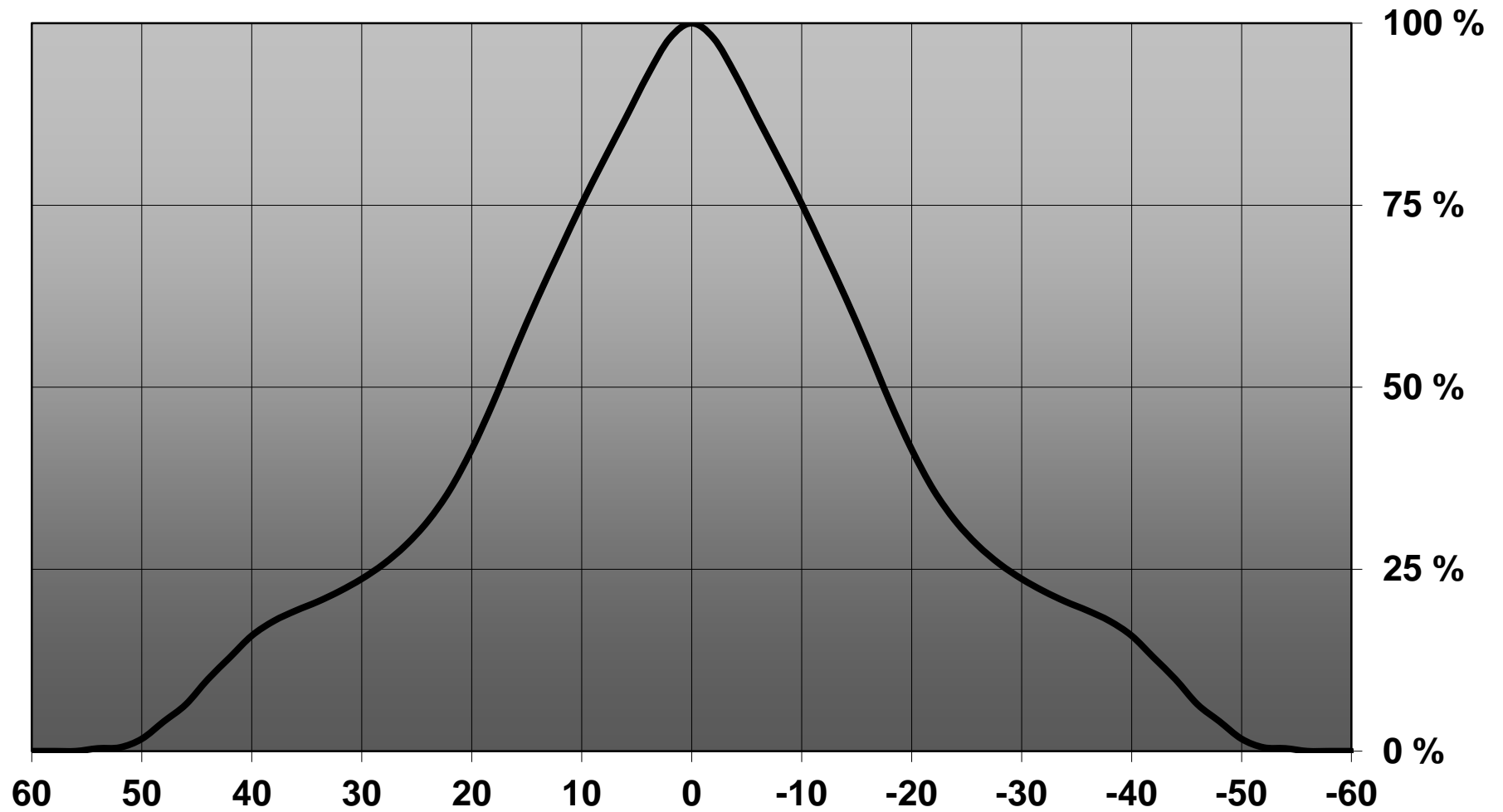
**Relative intensity of C12095\_MINNIE-M / CA12239\_MINNIE-M**



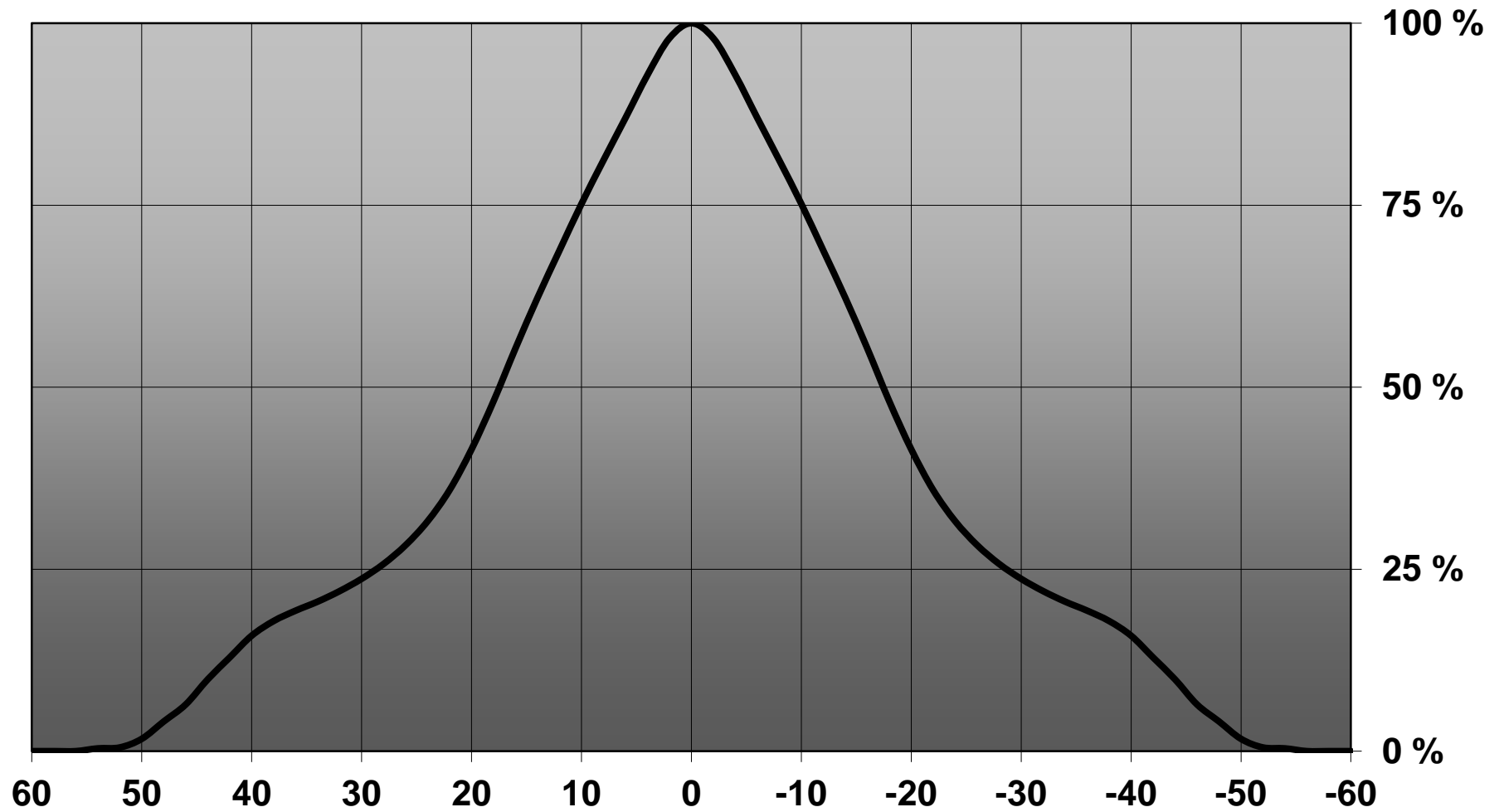
Relative intensity of CA12239\_Minnie-M-MTG-assy



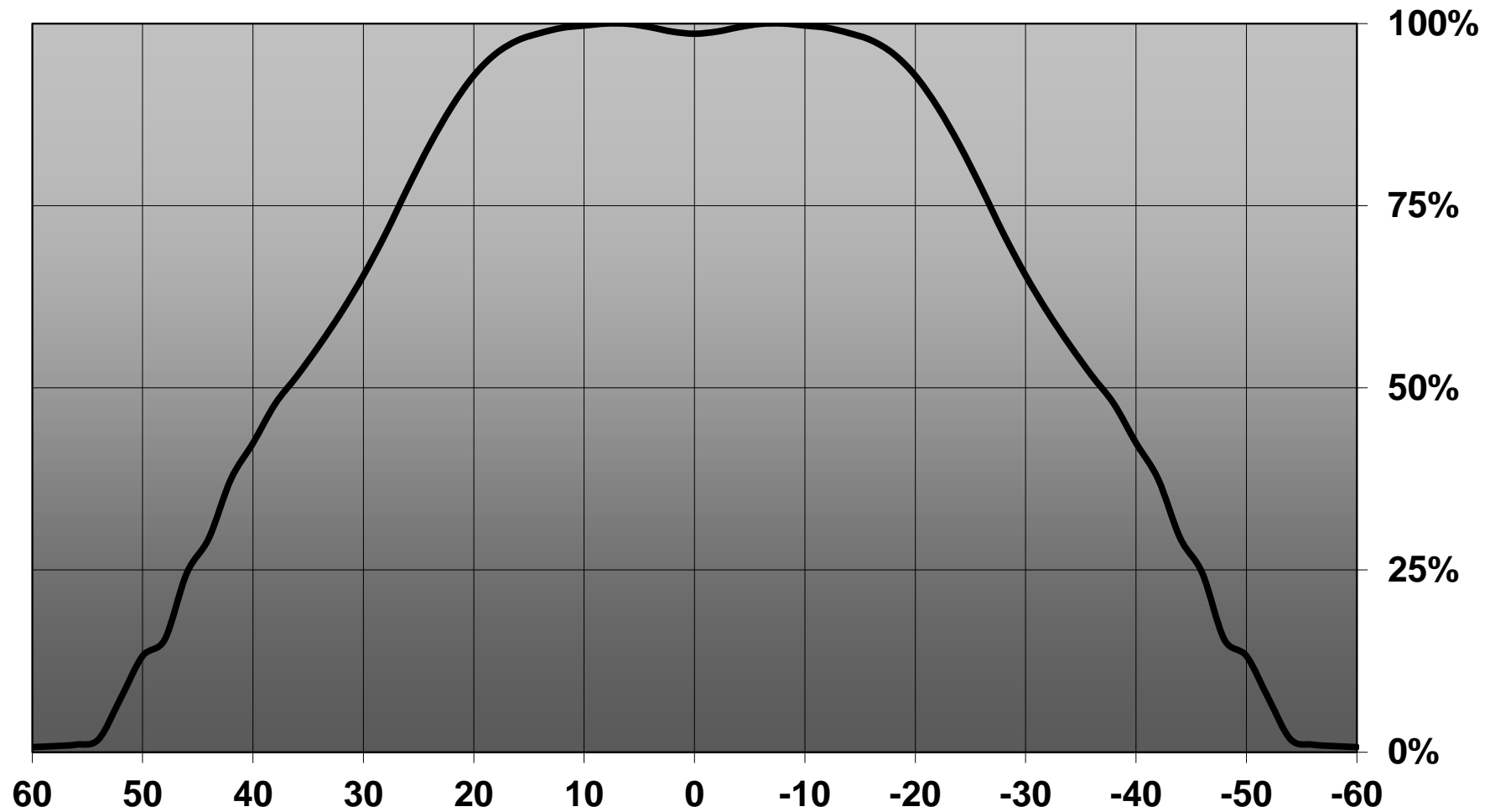
## Relative intensity of Minnie-W-MTG



# Relative intensity of Minnie-W-MTG

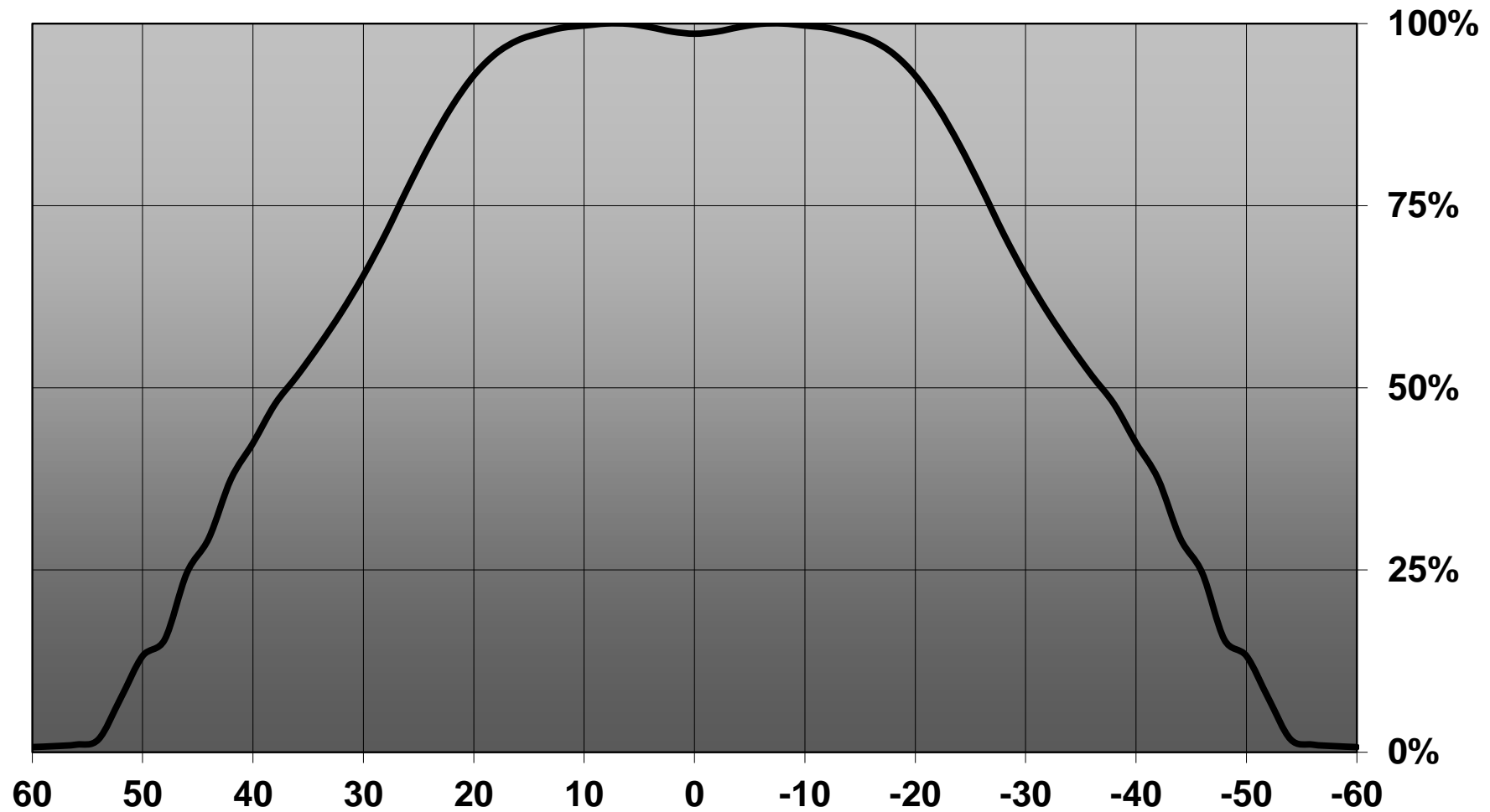


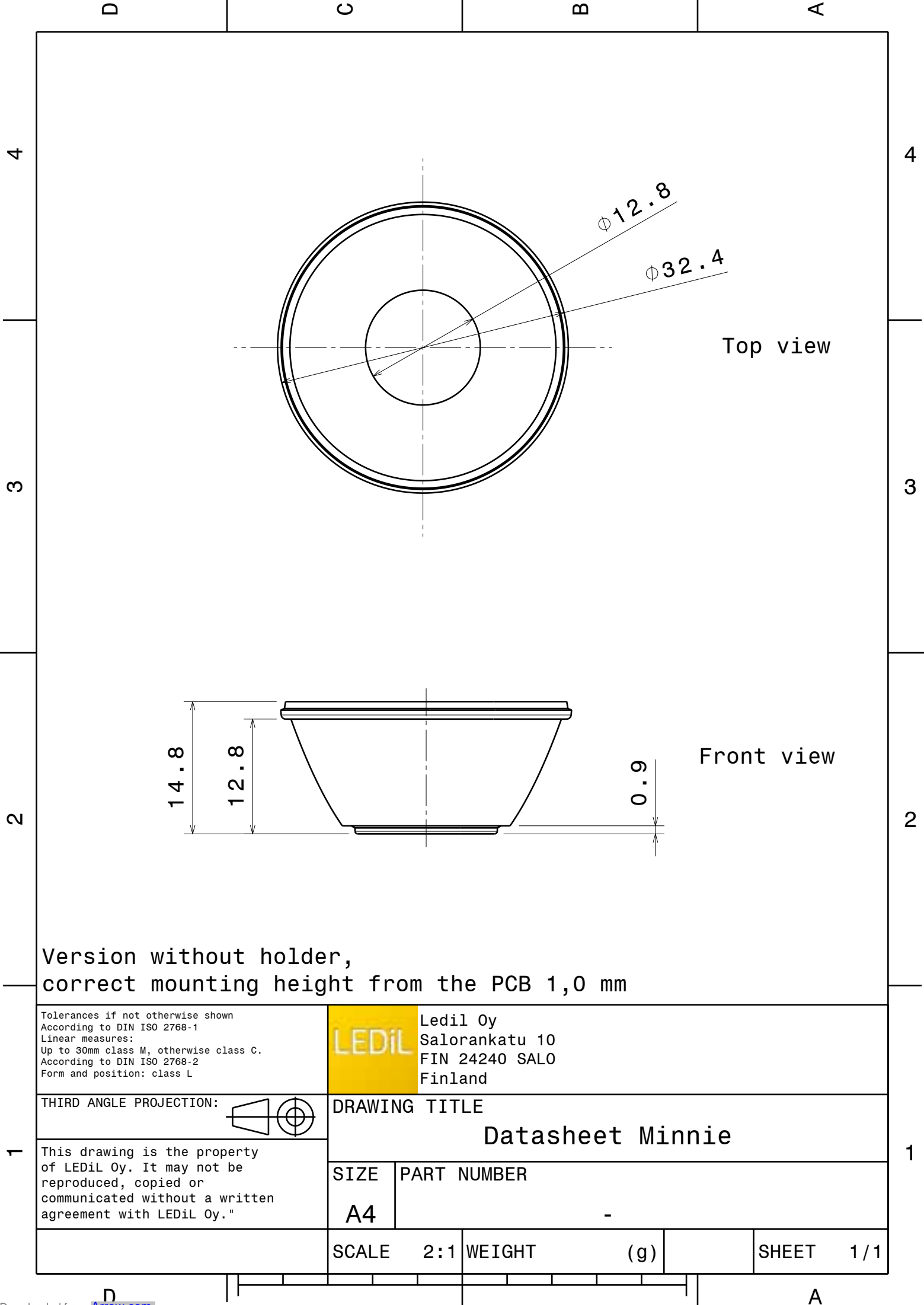
Relative intensity of CA12240\_Minnie-WWW-MTG-assy





Relative intensity of CA12240\_Minnie-WWW-MTG-assy

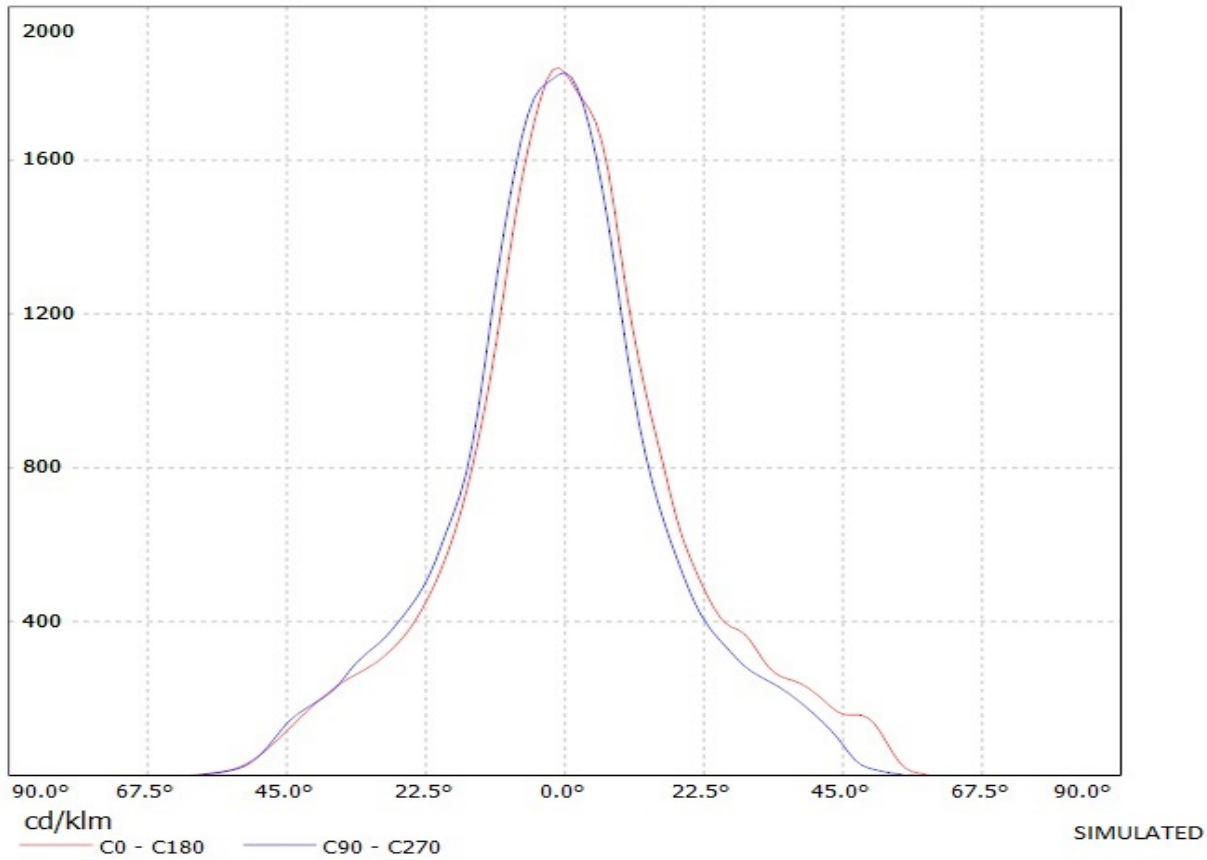




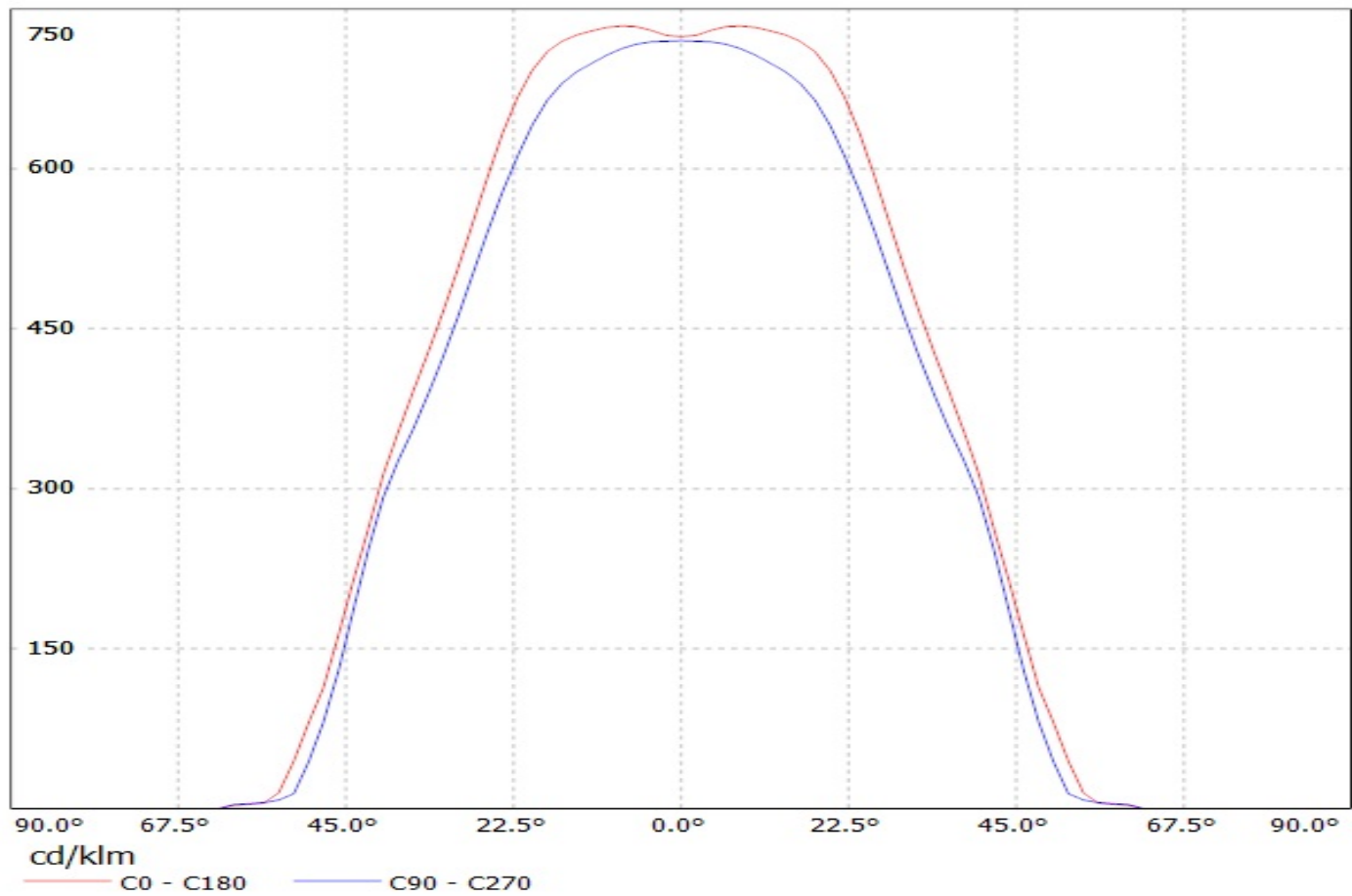
Version without holder,  
correct mounting height from the PCB 1,0 mm

Tolerances if not otherwise shown According to DIN ISO 2768-1 Linear measures: Up to 30mm class M, otherwise class C. According to DIN ISO 2768-2 Form and position: class L		<div>LEDiL</div> Ledil Oy Salorankatu 10 FIN 24240 SALO Finland			
THIRD ANGLE PROJECTION: 		DRAWING TITLE  Datasheet Minnie			
This drawing is the property of LEDiL Oy. It may not be reproduced, copied or communicated without a written agreement with LEDiL Oy."		SIZE  A4	PART NUMBER  -		
		SCALE 2:1	WEIGHT (g)		SHEET 1/1

Luminaire: Ledil Oy CA12239\_Minnie-M-MTG  
Lamps: 1 x Cree MT-G 745lm 250mA

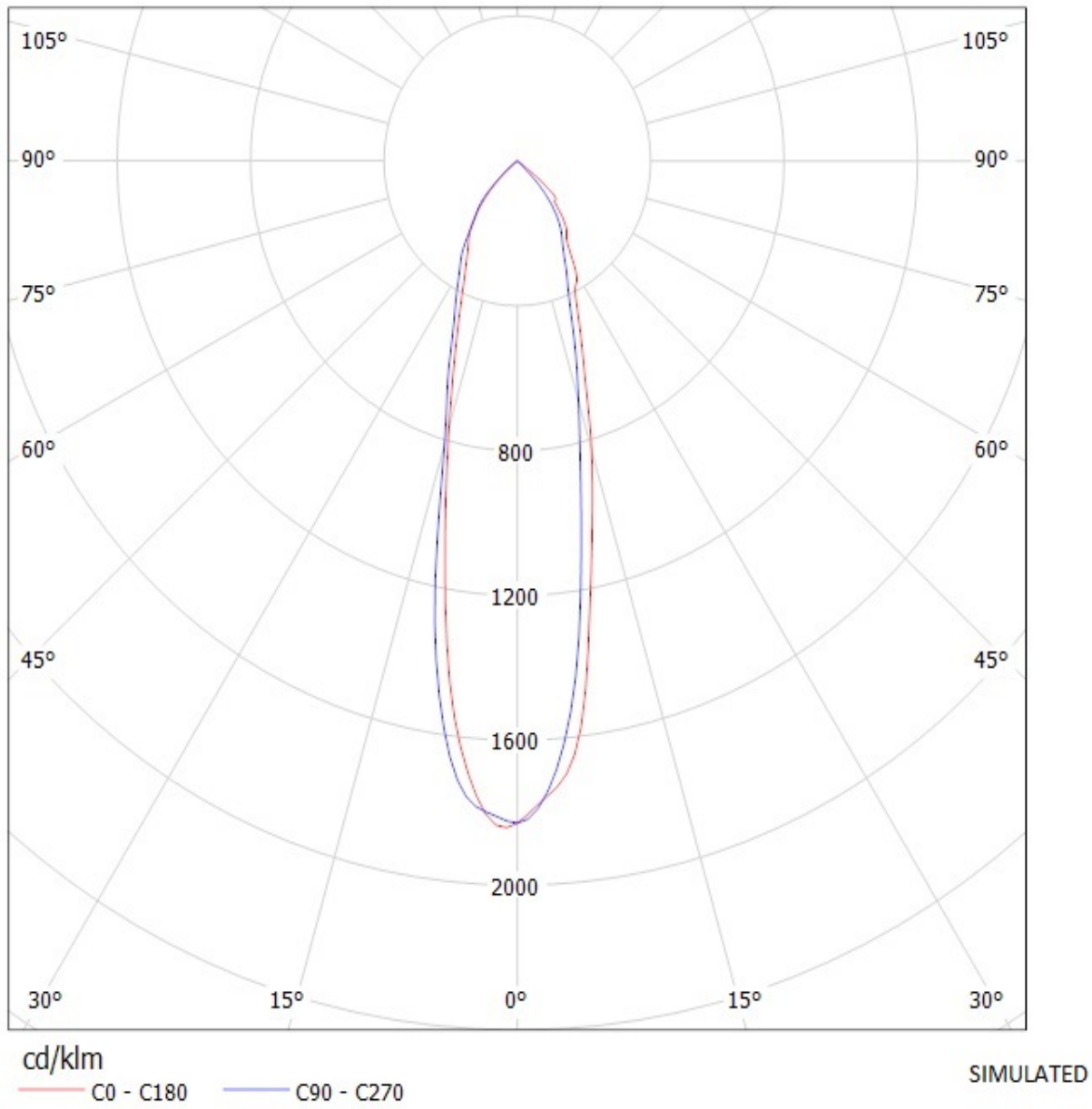


Luminaire: Ledil Oy C12097\_Minnie-WWW-MTG C12097\_Minnie-WWW-MTG  
Lamps: 1 x Cree MT-G 36V 745lm 250m



Luminaire: Ledil Oy CA12239\_Minnie-M-MTG

Lamps: 1 x Cree MT-G 745lm 250mA



Luminaire: Ledil Oy C12097\_Minnie-WWW-MTG C12097\_Minnie-WWW-MTG  
Lamps: 1 x Cree MT-G 36V 745lm 250m

