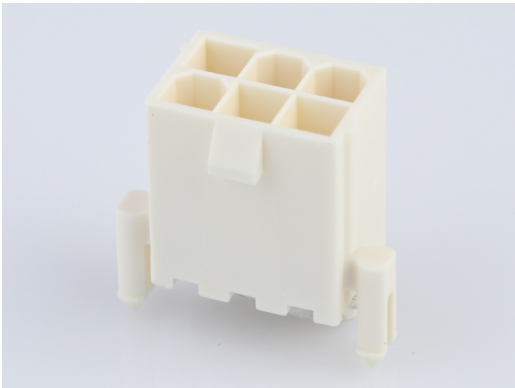




Part Number : [1724470706](#)
Product Description : Mini-Fit Versa Color Header, Dual Row, Vertical, with Snap-in Plastic Peg PCB Lock, 6 Circuits, Nylon 6/6, UL 94V-0, Tin (Sn) Plating, Glow-Wire Capable, Natural
Series Number : 172447
Status : Active
Product Category : PCB Headers and Receptacles



Documents & Resources

Drawings
[1724470706_sd.pdf](#)

3D Models and Design Files
[1724470706_stp.zip](#)

Specifications
[1722990000-AS-000.pdf](#)
[PS-5556-001-001.pdf](#)
[TS-5556-002-001.pdf](#)
[TS-5566-002-001.pdf](#)

Product Environment Compliance

Compliance

| | |
|--------------------|--|
| GADSL/IMDS | Not Relevant |
| China RoHS | |
| EU ELV | Not Relevant |
| Low-Halogen Status | Not Low-Halogen per IEC 61249-2-21 |
| REACH SVHC | Not Contained per D(2024)6225-DC (07 Nov 2024) |
| EU RoHS | Compliant per EU 2015/863 |

Multiple Part Product Compliance Statements
- Eu RoHS
- REACH SVHC

- Low-Halogen

Multiple Part Industry Compliance Documents

- IPC 1752A Class C
- IPC 1752A Class D
- Molex Product Compliance Declaration
- IEC-62474
- chemSHERPA (xml)

EU RoHS Certificate of Compliance

Part Details

General

| | |
|----------------|---|
| Status | Active |
| Category | PCB Headers and Receptacles |
| Series | 172447 |
| Description | Mini-Fit Versa Color Header, Dual Row, Vertical, with Snap-in Plastic Peg PCB Lock, 6 Circuits, Nylon 6/6, UL 94V-0, Tin (Sn) Plating, Glow-Wire Capable, Natural |
| Application | Power, Wire-to-Board |
| Component Type | PCB Header |
| Product Name | Mini-Fit Versa Color |
| UPC | 195842051072 |

Agency

| | |
|----|--------|
| UL | E29179 |
|----|--------|

Electrical

| | |
|-------------------------------|------------------|
| Current - Maximum per Contact | 9.0A |
| Voltage - Maximum | 600V AC (RMS)/DC |

Physical

| | |
|--------------------------------|---------|
| Breakaway | No |
| Circuits (Loaded) | 6 |
| Circuits (maximum) | 6 |
| Color - Resin | Natural |
| Durability (mating cycles max) | 30 |

| | |
|-------------------------------|----------------|
| First Mate / Last Break | No |
| Flammability | 94V-0 |
| Glow-Wire Capable | Yes |
| Guide to Mating Part | No |
| Keying to Mating Part | Yes |
| Lock to Mating Part | Yes |
| Material - Metal | Brass |
| Material - Plating Mating | Tin |
| Material - Resin | Nylon |
| Net Weight | 2.299/g |
| Number of Rows | 2 |
| Orientation | Vertical |
| Packaging Type | Tray |
| PCB Locator | Yes |
| PCB Retention | Yes |
| PCB Thickness - Recommended | 1.60mm |
| Pitch - Mating Interface | 4.20mm |
| Pitch - Termination Interface | 4.20mm |
| Polarized to Mating Part | Yes |
| Polarized to PCB | Yes |
| Shrouded | Fully |
| Stackable | No |
| Temperature Range - Operating | -40° to +105°C |
| Termination Interface Style | Through Hole |

Mates With / Use With

Mates with Part(s)

| Description | Part Number |
|---|--------------|
| Mini-Fit Jr. Dual Row Receptacle Housings | <u>46992</u> |

This document was generated on Mar 09, 2025