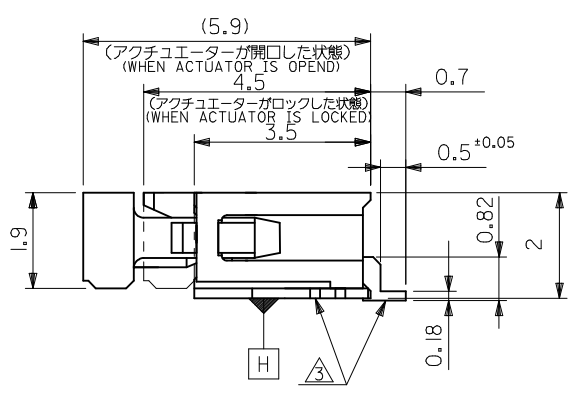



注記 NOTES

- 使用材料 : MATERIAL
ハウジング : 46ナイロン, UL94V-0
46NYLON
アクチュエータ : PPS, UL94V-0
ACTUATOR
ターミナル : リン青銅, 半田メッキ (t=0.2)
TERMINAL : PHOS-BRO.TIN- LEAD
金具 : リン青銅, 半田メッキ (t=0.2)
FITTING NAIL : PHOS-BRO.TIN-LEAD
- エンボステープ梱包時は、アクチュエータがロックした状態とする。
IN THE PACKAGE, ACTUATOR OF PART NO.52435-**-27 SHOULD BE LOCKED.
- △ソルダーテール半田付け面のズレ量、及び金具半田付け面のズレ量は、基準面 [H] に対し上方向 0.1 MAX. , 下方向 0.15MAX. とする。
MISALIGNMENT OF SOLDER TAILS AND FITTING NAILS FROM [H]
UPPER DIRECTION: 0.1 MAX. , LOWER DIRECTION: 0.15MAX.
- △偶数極に適用。
APPLY FOR EVEN CIRCUIT.
- △パターンはくり止め用金具。
FITTING NAIL FOR PREVENTION OF PEELING OF P.C.B. PATTERN.
- △R0.3は、FPCの導体部にかからないこと。
R0.3 MUST NOT BE OVERLAPPED TO PATTERN OF FPC.
7. ソルダーテールの平坦度は、0.1 MAXIMUM とする。
SOLDER TAIL COPLANARITY IS 0.1 MAXIMUM.



MODEL NO. 52435-**-27

REVISED	EC NO: J2015-0014 DRWNA:YOSHI I01 2014/07/08 CHKD:YKOBAYASHI022014/07/08 APPR:YNOGAWA 2014/07/17	DESCRIPTION	GENERAL TOLERANCES (UNLESS SPECIFIED)		DIMENSION STYLE MM ONLY		SCALE ---	DESIGN UNITS METRIC	 THIRD ANGLE PROJECTION	
			10 UNDER	± 0.2	DRAWN BY SKAJINUMA	DATE 91/10/31	TITLE 0.5 FPC CONN ZIF FOR SMT R/A (UPPER CONTAT)			
			10 OVER 30 UNDER	± 0.25	CHECKED BY MFUKUSHIMA	DATE 97/07/15				
			30 OVER	± 0.3	APPROVED BY MFUKUSHIMA	DATE 97/07/15				molex
			ANGULAR ±3 °		MATERIAL NO.		DOCUMENT NO.			
			DRAFT WHERE APPLICABLE MUST REMAIN WITHIN DIMENSIONS		SEE SHEET 2		SD-52435-018			1 OF 2
REV			SIZE A3 THIS DRAWING CONTAINS INFORMATION THAT IS PROPRIETARY TO MOLEX INCORPORATED AND SHOULD NOT BE USED WITHOUT WRITTEN PERMISSION							

F

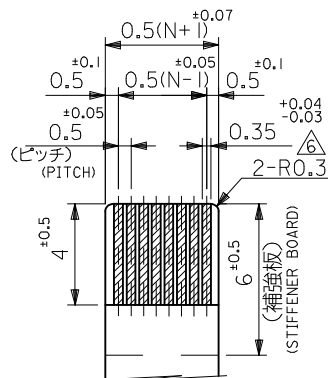
E

D

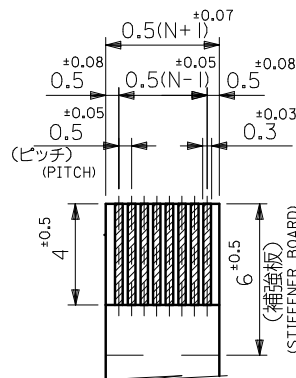
C

B

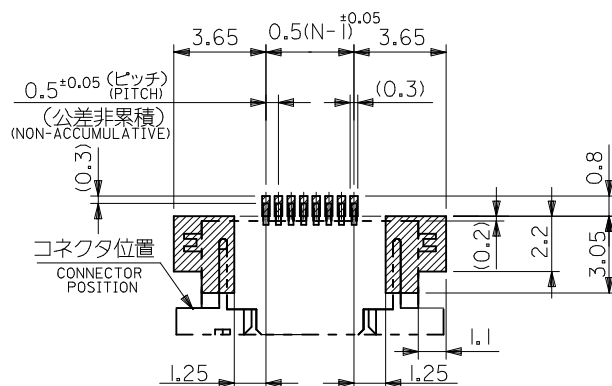
A



適合FPC推奨寸法
APPLICABLE FPC
RECOMMENDED DIMENSION.
(仕上がり厚さ: 0.3^{+0.05}/_{-0.05})
(THICKNESS: 0.3^{+0.05}/_{-0.05})



適合FFC推奨寸法
APPLICABLE FFC
RECOMMENDED DIMENSION.
(仕上がり厚さ: 0.3^{+0.05}/_{-0.05})
(THICKNESS: 0.3^{+0.05}/_{-0.05})



参考基板レイアウト
(マウント面)
RECOMMENDED P.C. BOARD
PATTERN DIMENSION (REF.)
(MOUNTING SIDE)

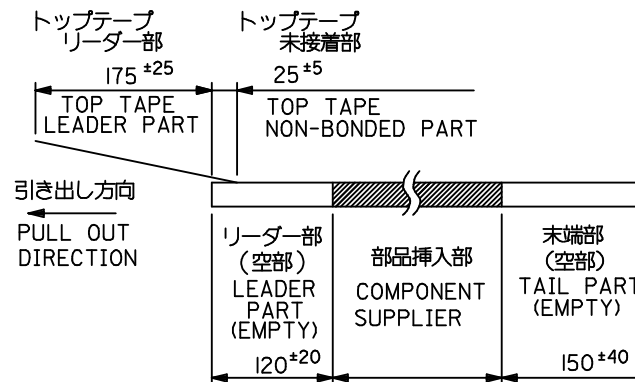
20.6	18.6	14.65	13.5	52435-2827	28
20.1	18.1	14.15	13.0	-2727	27
18.6	16.6	12.65	11.5	-2427	24
18.1	16.1	12.15	11.0	-2327	23
17.6	15.6	11.65	10.5	-2227	22
16.6	14.6	10.65	9.5	-2027	20
16.1	14.1	10.15	9.0	-1927	19
15.6	13.6	9.65	8.5	-1827	18
15.1	13.1	9.15	8.0	-1727	17
14.6	12.6	8.65	7.5	-1627	16
14.1	12.1	8.15	7.0	-1527	15
13.6	11.6	7.65	6.5	-1427	14
13.1	11.1	7.15	6.0	-1327	13
12.1	10.1	6.15	5.0	-1127	11
11.6	9.6	5.65	4.5	-1027	10
11.1	9.1	5.15	4.0	-0927	9
10.6	8.6	4.65	3.5	-0827	8
10.1	8.1	4.15	3.0	-0727	7
9.6	7.6	3.65	2.5	52435-0627	6

MODEL NO.	52435-**27	D	C	B	(A)	MATERIAL NO.	極数
-----------	------------	---	---	---	-----	--------------	----

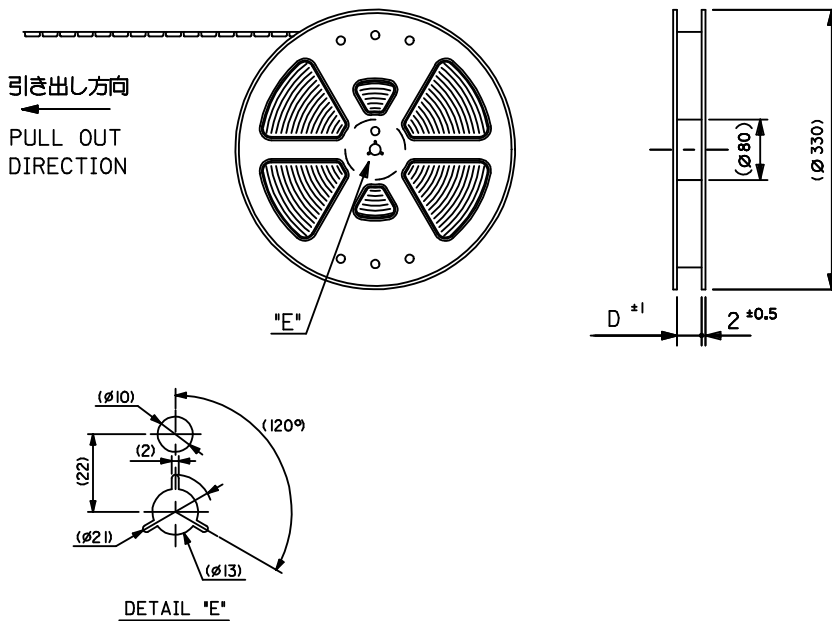
REVISED EC NO: J2015-0014 DRWN:AYOSHI I01 2014/07/08 CHKD:YKOBAYASHI 022014/07/08 APPR:YNOGAWA 2014/07/17	DESCRIPTION	GENERAL TOLERANCES (UNLESS SPECIFIED)		DIMENSION STYLE MM ONLY		SCALE ---	DESIGN UNITS METRIC	THIRD ANGLE PROJECTION		
		10 UNDER	±0.2	DRAWN BY SKAJINUMA	DATE 91/10/31	TITLE 0.5 FPC CONN ZIF FOR SMT R/A (UPPER CONTAT)				
		10 OVER 30 UNDER	±0.25	CHECKED BY MFUKUSHIMA	DATE 97/07/15					
		30 OVER	±0.3	APPROVED BY MFUKUSHIMA	DATE 97/07/15	molex				
		ANGULAR ±3 °		MATERIAL NO.						
		DRAFT WHERE APPLICABLE MUST REMAIN WITHIN DIMENSIONS		SEE CHART		SD-52435-018			2 OF 2	
	REV	THIS DRAWING CONTAINS INFORMATION THAT IS PROPRIETARY TO MOLEX INCORPORATED AND SHOULD NOT BE USED WITHOUT WRITTEN PERMISSION								

注記 NOTES

- 製品番号 52435-***27の梱包状態はアクチュエータがロックした状態とする。
詳細寸法については図面SD-52435-018を参照下さい。
IN THE PACKAGE,ACTUATOR OF PART NO.52435-***27 SHOULD BE LOCKED
RE DETAILED DIMENSIONS,SEE SD-52435-018
- 梱包数量：1000個／リール
NUMBER OF CONNECTORS:1000PCS/REEL
- リードテープ長さ LEAD TAPE LENGTH

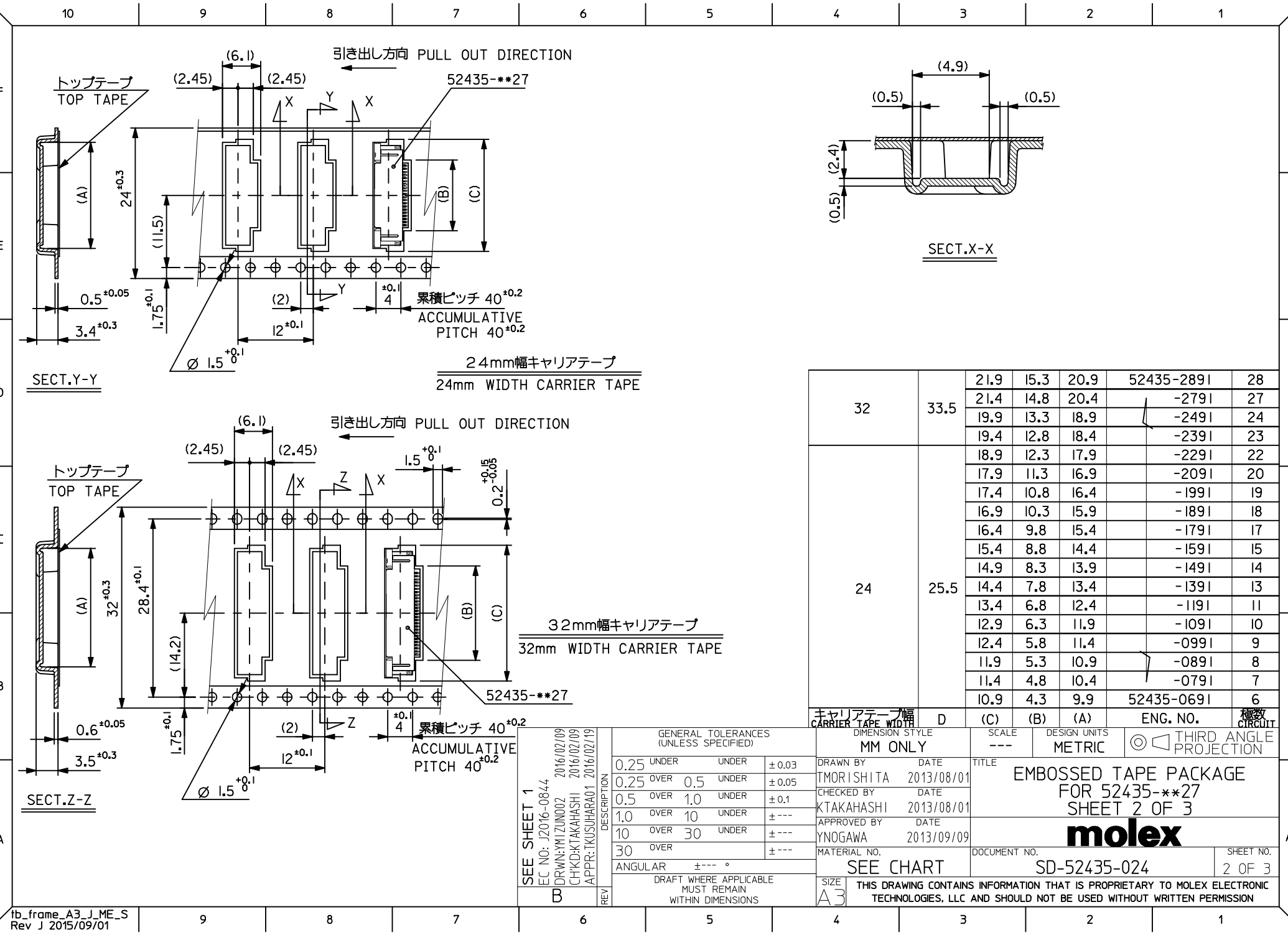


- トップテープの剥離強度：(剥離方向は下図参照)
0.1N～0.7N(10.2gf～71.4gf) 尚、本規格値は、出荷時に適用。
(但し、輸送時に剥離が発生しない事。)
PEELING OFF FORCE OF TOP TAPE
0.1N～0.7N(10.2gf～71.4gf)(PEELING DIRECTION AS SHOWN IN FOLLOWING FIG.)
THIS REQUIREMENT SHOULD BE APPLIED AT SHIPMENT
PEEL OFF SHOULD NOT BE ALLOWED,
DURING TRANSPORTATION



- 材料 (MATERIAL)
キャリアテープ (CARRIER TAPE)：ポリプロピレン (POLYPROPYLENE)
トップテープ (TOPTAPE)：PET, PE, PEF
リール (REEL)：ポリスチレン (PS) <リサイクル材を含む>
POLYSTYREN (PS) <RECYCLE MATERIAL CONTAINED>

REVISED	EC NO: J2016-0844 DRAWN: YMI ZUN002 CHKD: K TAKAHASHI APPR: T KUSUHARA01	2016/02/09 2016/02/09 2016/02/09 2016/02/19	DESCRIPTION	GENERAL TOLERANCES (UNLESS SPECIFIED)			DIMENSION STYLE MM ONLY		SCALE ---	DESIGN UNITS METRIC	THIRD ANGLE PROJECTION	
				0.25 UNDER	UNDER	± 0.03	DRAWN BY	DATE	TITLE EMBOSSED TAPE PACKAGE FOR 52435-**27 SHEET 1 OF 3 molex	DOCUMENT NO. SD-52435-024	SHEET NO. 1 OF 3	
				0.25 OVER	0.5 UNDER	± 0.05	TMORI SHITA	2013/08/01				
				0.5 OVER	1.0 UNDER	± 0.1	CHECKED BY	DATE				
				1.0 OVER	10 UNDER	± ---	KTAKAHASHI	2013/08/01				
				10 OVER	30 UNDER	± ---	APPROVED BY	DATE				
				30 OVER		± ---	YNOGAWA	2013/09/09				
				ANGULAR ± --- °			MATERIAL NO.					
							SEE SHEET 2-3					
				DRAFT WHERE APPLICABLE MUST REMAIN WITHIN DIMENSIONS			SIZE A3		THIS DRAWING CONTAINS INFORMATION THAT IS PROPRIETARY TO MOLEX ELECTRONIC TECHNOLOGIES, LLC AND SHOULD NOT BE USED WITHOUT WRITTEN PERMISSION			



32	33.5	21.9	15.3	20.9	52435-289 I	28	
		21.4	14.8	20.4	-279 I	27	
		19.9	13.3	18.9	-249 I	24	
		19.4	12.8	18.4	-239 I	23	
24	25.5	18.9	12.3	17.9	-229 I	22	
		17.9	11.3	16.9	-209 I	20	
		17.4	10.8	16.4	-199 I	19	
		16.9	10.3	15.9	-189 I	18	
		16.4	9.8	15.4	-179 I	17	
		15.4	8.8	14.4	-159 I	15	
		14.9	8.3	13.9	-149 I	14	
		14.4	7.8	13.4	-139 I	13	
		13.4	6.8	12.4	-119 I	11	
		12.9	6.3	11.9	-109 I	10	
		12.4	5.8	11.4	-099 I	9	
		11.9	5.3	10.9	-089 I	8	
		11.4	4.8	10.4	-079 I	7	
		10.9	4.3	9.9	52435-069 I	6	
キャリアテープ幅 CARRIER TAPE WIDTH		D	(C)	(B)	(A)	ENG. NO.	極数 CIRCUIT

SEE SHEET 1
EC NO: J2016-08/44
DRWN: YMIJUN002 2016/02/09
CHKD: KTAKAHASHI 2016/02/09
APPR: TKUSUHARA01 2016/02/19

DESCRIPTION
REV B

GENERAL TOLERANCES (UNLESS SPECIFIED)
0.25 UNDER UNDER ±0.03
0.25 OVER 0.5 UNDER ±0.05
0.5 OVER 1.0 UNDER ±0.1
1.0 OVER 10 UNDER ±---
10 OVER 30 UNDER ±---
30 OVER ±---
ANGULAR ±--- °
DRAFT WHERE APPLICABLE MUST REMAIN WITHIN DIMENSIONS

DIMENSION STYLE
MM ONLY

DRAWN BY DATE
TMORISHITA 2013/08/01

CHECKED BY DATE
KTAKAHASHI 2013/08/01

APPROVED BY DATE
YNOGAWA 2013/09/09

MATERIAL NO.

SEE CHART

SIZE
A3

THIS DRAWING CONTAINS INFORMATION THAT IS PROPRIETARY TO MOLEX ELECTRONIC TECHNOLOGIES, LLC AND SHOULD NOT BE USED WITHOUT WRITTEN PERMISSION

SCALE

DESIGN UNITS
METRIC

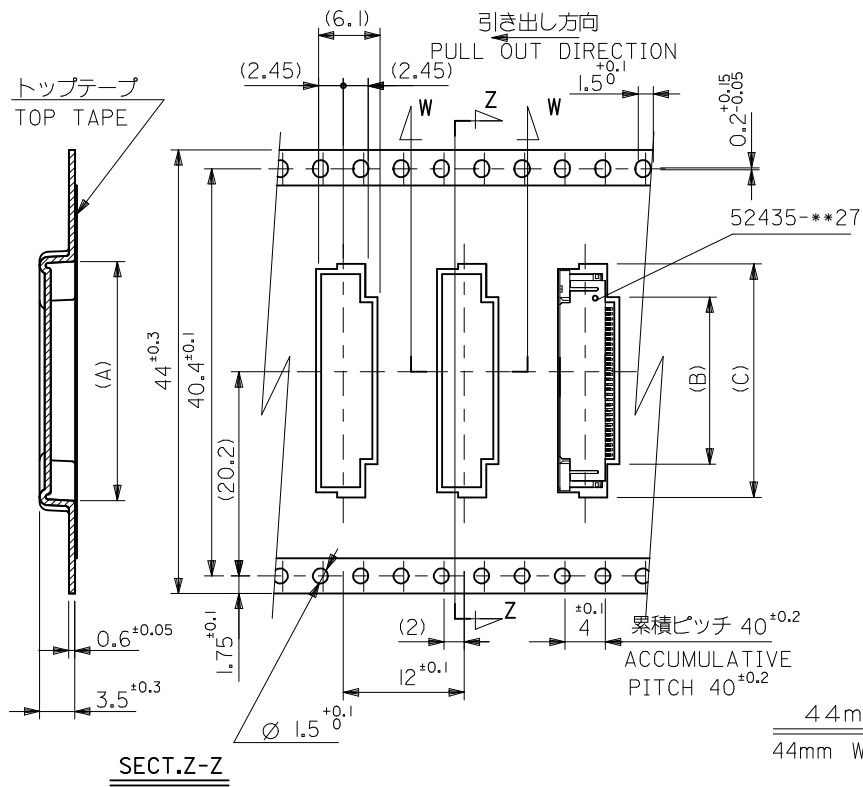
THIRD ANGLE PROJECTION

EMBOSSED TAPE PACKAGE
FOR 52435-**-27
SHEET 2 OF 3

molex

DOCUMENT NO.
SD-52435-024

SHEET NO.
2 OF 3



44	45.5	22.9	16.3	21.9	52435-3091	30
キャリアテープ幅 CARRIER TAPE WIDTH	D	(C)	(B)	(A)	ENG. NO.	極数 CIRCUIT
DIMENSION STYLE MM ONLY		SCALE ---	DESIGN UNITS METRIC		THIRD ANGLE PROJECTION	
DRAWN BY DATE		TITLE				
TMORISHITA 2013/08/01		EMBOSSD TAPE PACKAGE				
CHECKED BY DATE		FOR 52435-**27				
KTAHASHI 2013/08/01		SHEET 3 OF 3				
APPROVED BY DATE		molex				
YNOGAWA 2013/09/09						
MATERIAL NO.		DOCUMENT NO.				SHEET NO.
SEE CHART		SD-52435-024				3 OF 3
SIZE A3	THIS DRAWING CONTAINS INFORMATION THAT IS PROPRIETARY TO MOLEX ELECTRONIC TECHNOLOGIES, LLC AND SHOULD NOT BE USED WITHOUT WRITTEN PERMISSION					